

**Special Education Week  
declared for May 11-17**  
- see page one

**Musical students offered  
summer school program**  
- see page 3

**Spring Concert features  
chorus, orchestra at BHS**  
- see page 5

# Belleville Times

77 Year No. 22 An Orecchio Publication

Serving Belleville Since 1909

Thursday, May 8, 1986

35¢



**Big Question** - The big question facing the Belleville Board of Commissioners is whether to proceed with its \$10 million town hall project or build an extension for township departments and a police station at the rear of town hall.

## Citizens say no to town hall Majority supports police HQ expansion

By Michele Jeanotte

A majority of citizens responding to a survey do not support the Belleville Board of Commissioners' \$10 million town hall project; however, the majority of citizens does support an expansion of police headquarters.

Of the 50 responses from property owners and tenants received by the Belleville Times, 63 of them were in favor of the town hall project, although 51 of them believe the present facilities are not adequate. Twenty-seven responses favored the \$10 million town hall project, while 30 believe the present facilities are adequate.

Seventy-eight responses were from property owners and homeowners, while 11 were from tenants within the Township of Belleville.

Thirty-seven citizens support an expansion to the present town hall while 50 do not. However, 59 citizens support an expansion to police headquarters and 30 do not. The majority of citizens, 71 of them, believe the police headquarters should remain on Washington Avenue, mainly because it acts as a deterrent to crime which results from Belleville's proximity to the Newark line.

Other reasons given for the police headquarters remaining on

Washington Avenue were that all departments should be together and provide a "one-stop shopping" concept, reasoning behind new town hall complex is its proximity to Route 31, the Grand Union Shopping Plaza and most of the township's banks. It is centrally located and is easily accessible.

Seventeen citizens do not believe the "second headquarters" should remain on Washington Avenue. Some of them believe a

new headquarters should be built on Franklin Avenue, near the recently built fire headquarters, and others believe unused buildings, such as School 1, partially occupied or vacant buildings or factories should be converted for a new police headquarters at "minimum cost."

Sixty-one citizens believe that a \$10 million town hall complex will

(Continued on page 5)

## County-owned land chosen as senior citizen housing site

By Christopher Bilanti

County-owned property on the site of the Essex County Geriatrics Center on Franklin Avenue has been designated as the best location for the proposed senior citizens' housing complex, according to James Sweeney of Sweeney Associates in Union, a consultant hired by the Township of Belleville.

In addition to reviewing potential sites for the complex, Sweeney is also assisting the township with the filing of HUD (Housing and Urban Development) applications necessary to finance the project. Sweeney said the Newark office of HUD will be advertising the availability of funds for senior citizen housing "momentarily" and added that Belleville's site has "all the ingredients" to win funding.

Three senior citizens' projects will be selected throughout the state, Sweeney said, "with each project being funded for between 80-100 units."

The site at the Essex County Geriatrics Center was chosen over two other sites in Belleville which were under consideration: School 1, now the school board complex on Cortlandt Street and the area behind the senior citizens' recreation building on Franklin Avenue were the other sites.

Sweeney declined to give

specific reasons why the geriatrics center site was selected over the other two, but Commissioner of Public Safety Ralph DiRuggiero said Tuesday, "We chose the site (at the Essex County Geriatrics Center) because there was more land, it's on a public transportation route, it's close to a shopping center, and it's across the street from a golf course which many senior citizens use."

Sweeney said that after HUD advertises the availability of senior citizens' housing funds

Belleville must "put together a high scoring application."

Whether or not the application scores high enough to award Belleville the funds needed to proceed will be known by Sept. 30, the end of the federal fiscal year.

Meanwhile, transfer of the county-owned land must be facilitated by Essex County Executive Peter Shapiro.

DiRuggiero said Mayor Michael Marotti has been talking to Shapiro about the chosen site.

## Township celebrates Special Education

The Belleville Board of Education has joined the Special Education Parent and Professional Organization (SEPPO) in celebrating Special Education Week May 11-17.

The board of education unanimously passed a resolution last week declaring Special Education Week within the Township of Belleville. The resolution joins the district with New Jersey School Boards Association and the Association of Schools and Agencies for the Handicapped in recognizing the efforts of both special education students and staff.

The resolution calls upon citizens to recognize the contribution of school board members, administrators, school staff, service agencies, parents and students themselves to special education. Nearly 10,000 children receive special education instruction in New Jersey. In Belleville there are approximately 380 children in special education programs.

SEPPO will honor all special education teachers, aides, speech teachers, nurses and child study team members, as well as administrators and principals, with a wine and cheese cocktail party Tuesday, May 13, 3:30 - 5:30 p.m., at the Little League Field House on Montgomery Place. Each staff person will receive a gift of appreciation and certificate.

Special awards will be presented to Tom Angella, owner of The Chandelier, and Jim Fleming of Fleming's Restaurant and Bar Supplies, both in Belleville, for their contributions to special education.

In celebration of Special Education Week, children will participate in a balloon launch, Thursday, May 15, 3:30 p.m. at the Little League Field House.

Activities sponsored by SEPPO in Belleville include the annual Special Olympics, holiday parties, summer barbecues and annual bowling tournaments.

Information about SEPPO and special education programs is available by calling Bernadette Naso at 759-1584 or Dr. Anthony Chirico, director of special services, at 450-3494.

## Activist group lists 8 recommendations

A newly formed township activist group called Concerned Citizens of Belleville (CCB) has released a list of eight recommendations regarding the improvement of municipal government facilities.

The list of recommendations was sent last week to the Citizens' Review Committee, a panel of Belleville officials and residents studying alternatives to the board of commissioners' \$10 million new town hall plan.

Foremost on the CCB list is a recommendation to "rescind or reduce the \$10 million bond passed in May, 1985 to finance a new town hall and which is currently blocked by a moratorium to alleviate public fears of this project escalating back to \$10 million."

Instead, the CCB endorses a \$3 million cap for a public safety building, to be built on the site of the present Public Safety Annex, a small converted frame house.

The next three recommendations on the list call for designing the project on town land only, preserving the existing Town Hall, and "scrapping plans for a civic center at this time."

The CCB further recommends designing a master plan for the entire Town Hall area, analyzing financial projections "before making any commitments," and putting the entire issue to referendum after a "comprehensive" plan is developed.

The eighth recommendation was not really a recommendation at all, but a comment.

"We question the ability of the present architect, Frank Richman of Beckhard-Richman Associates, N.Y., to design an alternate

(Continued on page 5)

## Commissioners meet May 13 at Town Hall

The Belleville Board of Commissioners will meet May 13 at 5 p.m. for a regularly scheduled session at Town Hall.

The Citizens' Review Committee, a board commissioned panel of Belleville officials and residents studying alternatives to the board's \$10 million plan for a new town hall, will give a preliminary report.

An ordinance to vacate portions of Leslie Street to make room for Union Glen Development Corporation's proposed 30-unit condo

project is also on the agenda. Leslie Street is a gutter street, according to Mayor Les Hood, township clerk.

A resolution honoring James J. Cozzarelli as trustee of the Belleville Public Library, who was recently named the New Jersey Library Association's Trustee of the Year, will be read and voted on by the board.

Of particular interest, there will be a reading of the amended Belleville municipal budget, with a public hearing to follow.

## Six tax points cut from school budget

The Belleville Board of Commissioners has reduced the 1986-87 school budget by six tax points or approximately \$270,000.

In a special meeting conducted last Wednesday night, commissioners reduced the \$19.4 million budget, which was defeated in the April 15 election by 4 tax points or \$180,000 in capital outlay and by 2 tax points or \$90,000 in current expenses. The school budget reflected a 25.4 tax point increase.

According to Edward J. Appleton, school board secretary, the \$180,000 reduction in the capital outlay portion of the budget will

allow the board, scheduled to take place at the middle school, to make a capital outlay portion, \$459,000, was earmarked for repairs to the middle school.

"We will not be able to do as much as we wanted to do at the middle school," Appleton said. "We now have to look at where cuts would have the least impact on programs."

According to Appleton, the board of education will review the reductions and determine in what areas they will be made.

"Once the school budget is revised, the board will have to approve it by resolution."



**By Resolution** - The Belleville Board of Education recently signed a resolution declaring May 11-17 Special Education Week in Belleville. Pictured with the resolution are Dr. Anthony Chirico, director of special services, and Mrs. Bernadette Naso of the Special Education Parent and Professional Organization.



## Local realtor named exclusive sales agent

Govel Realtors of Belleville has been appointed exclusive sales and marketing agent for Fox Run at Brelle, a private enclave of limited edition townhouse residences, and The Ridge at Caldwell, a planned 54-unit luxury condominium community.

Construction of the 15 luxury townhomes at Fox Run is scheduled to begin during the early summer months on Route 70 in Brelle, a popular residential community on the New Jersey shore. The residences at Fox Run will average more than 1,700 square feet of living space and feature such design concepts as cathedral

ceilings, skylights and outdoor balconies.

Occupancy of the Fox Run residences is scheduled to begin in the fall of 1986.

Construction of The Ridge is scheduled to begin in late spring at the site on Bloomfield Avenue and Espy Road in Caldwell.

The residences at The Ridge will feature two contemporary-styled bedrooms and baths and will average more than 1,500 square feet of living space.

Inquiries about Fox Run or The Ridge residences are now being accepted by Govel Realtors, 727 Joralemon St.



Jean McCartyne

## Trust Company reports an increase in deposits

Sharply increased deposits and higher earnings for the first quarter of 1986 were reported by Sigi B. Wilzig, chairman and president of The Trust Company Bancorporation (O.T.C.), parent company of The Trust Company of New Jersey, at the company's annual meeting.

The Trust Company, at year end, reported record assets of \$1.2 billion; deposits of \$1.05 billion and earnings of \$6,150,000 or \$5.33 per share.

The bank's first quarter

deposits increased by \$142 million over last year and per share earnings increased from \$1.58 to \$1.82 or 15 percent over the prior year.

Wilzig also announced at the meeting that the company has selected 10 more branch sites to be added to its 27-branch network.

A branch of The Trust Company is located in the Grand Union Shopping Plaza on Main Street in Belleville.



Florence Kibitlowski

## The Provident Savings Bank appoints three new officers

Three bankers have been named officers of The Provident Savings Bank, according to Kenneth E. N. Albers, chairman of the board and chief executive officer.

Jean McCartyne of Bloomfield, who joined Provident as an administrative assistant in 1975, was named assistant secretary. She holds New Jersey Real Estate and Life Insurance licenses and attended the Savings Banks Association School at Fairleigh Dickinson University.

Florence Kibitlowski of Jersey

City was named assistant secretary. Having joined Provident in 1972 as a clerk, she subsequently served in various capacities including supervisor in the checking department and administrative assistant.

Ann Sharkey of Park Ridge, a career banker, was named as-

stant treasurer. She joined Provident as a field representative in the Mortgage Origination Department and has held several posts at the bank including mortgage adjuster and administrative assistant. Sharkey is a graduate of Pennsylvania State University where she was granted a Bachelor of Science Degree.

## Frances Weiss named director of PR for Liver Foundation

Frances Weiss of Belleville has been named public relations director for the American Liver Foundation at the national headquarters in Cedar Grove.

Ms. Weiss was previously assistant director of communications at the Salvation Army's national headquarters in Verona. She had been with the organization in

various positions since 1965, working in New York City until 1982.

Earlier she was a reporter for two New Hampshire daily newspapers, the Manchester Union Leader and The Valley News.

Ms. Weiss holds a B.A. from Hunter College and an M.S. from the Columbia University School of Journalism.

## TROISE INSURANCE AGENCY

ALL FORMS OF INSURANCE  
Auto • Motorcycle • Truck  
Fire • Computer • Quote  
Personalized Service

759-4100

172 WASHINGTON AV. BELLEVILLE



## George E. MacMunn Co. begins training seminars

Sales associates from George E. MacMunn Company of New Jersey recently began nine days of intensive training for success in seminars sponsored by the Home

to Home Real Estate Network, a state-wide association of independently owned and operated real estate brokers.

Our associates should get a lot of solid training during the nine full days of expert instruction, three days a week for three weeks," George E. MacMunn, president, said.

"At the seminars this month," he added, "our associates will be learning from outside experts from members of Home to Home who are skilled in particular areas of real estate, and from videotapes of some of America's outstanding real estate experts."

"Although we Home to Home members cooperate with each other for educational purposes to share ideas, to cooperate on house tours, and to refer buyers, we all manage independent offices and know the local communities we serve," MacMunn said.

George E. MacMunn Company serves the Belleville-Bloomfield-Nutley community.

## Aitken serves on banking committees

S. Thomas Aitken, chairman of Peoples Bank N.A. in Belleville, was among 19 Essex County bankers selected to serve on 1986-87 committees of the New Jersey Bankers Association (NJBA) by Robert A. Rough, NJBA chairman.

Aitken will serve on the Director Management and Legislation and Taxation committees.

## DENTALLY SPEAKING

By Drs. James D. Muglia and Paul N. De Maio

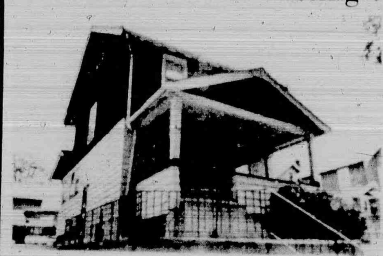
Mrs. K. of Bloomfield states: "My daughter's lower permanent teeth are coming in behind her baby teeth. Is this normal?"

Location: Mrs. K. The baby teeth are solid and the permanent teeth move into the space and space. The baby teeth are a space before her baby teeth is ahead of schedule or her baby teeth is behind schedule of leaving. I would recommend that she be seen sooner for an x-ray. The recommended procedure is to remove the baby teeth that is in front of the permanent teeth and at the same time the similar baby teeth on the opposite side. By removing the second baby teeth in corresponding permanent tooth can align itself with the already erupting permanent teeth in the opposite side. The first time that was removed to your daughter is a permanent condition and may be associated with a lack of space for the erupting permanent teeth. Again good dental plan suggest some

Send Inquiries To:

Dentally Speaking  
671 Franklin Avenue  
Nutley, N.J. 07110  
867-4421

## Another DeCarlo Listing!



Belleville Colonial  
Very nice location! Well kept 3 bedroom colonial, living room, dining room, eat-in kitchen, driveway. Asking \$139,000.

Ann DeCarlo

AGENCY, REALTOR  
880 BROAD ST., BROOKDALE, BLOOMFIELD  
748-5288



1885 1986  
101 Years of Uninterrupted Dividends

HOP IN



24 HOUR CAR LOANS

USUALLY WITHIN 3 BUSINESS DAYS

9.00%... 36 MOS. APR - 9.00%

NEW CARS ONLY — LIMITED TIME ONLY!

And you don't need an account with us to qualify.

1st DeWITT SAVINGS AND LOAN ASSOCIATION

BELLEVILLE • BLOOMFIELD • CEDAR GROVE • HOPATCONG

BRICKTOWN • PARSIPPANY

TELEPHONE 751-2800 ALL OFFICES



Affordably Corbo



Cameos! Cameos! Our own imports. Special from \$55

Just in time for Mother's Day, Corbo brings you an exciting collection of cameos direct from Italy. Each hand-carved cameo is a unique work of art. Each has been chosen with care by Corbo to assure you the finest quality at a very affordable price.

SHOWN: A sample from our Corbo Cameo Collection; all rings, pendants and earrings are beautifully set in 14K gold. Specialty priced from \$55 to \$200.

Merchandise displayed to show detail

Corbo Jewelers

Major Credit Cards or open a Corbo Charge Account now.  
Bloomfield, 586 Bloomfield Ave. • Clifton, 1055 Bloomfield Ave.  
Bergen Mall, Paramus • Rockaway Town Square Mall, Rockaway  
Ocean County Mall, Toms River  
Also in Yorkers and Valley Stream, New York





It's Not an Illusion - The Belleville High School Winterguard squad, named "Illusions," recently lost its season championship by only nine-tenths of a point. The squad moved from the novice level to the intermediate level after only three competitions into its second year.

## Summer music school offered to students daily for five weeks

By Michelle Jeannotte

A summer music school for Belleville students in grades 2-12 will be conducted weekdays from June 26 through July 30 at School 7.

Application forms for the summer music school will be available through the schools' respective music teachers beginning next week according to Edwin C. Black, music teacher at the high school and program director.

Classes and lessons, which will be conducted from 8:30 a.m. noon Mondays through Friday, will be geared to meet the needs of the students attending Black said. An assembly program in which students can demonstrate their skills will be conducted every Friday from 11 a.m. noon, he added.

According to Black, the summer music school is broken down into three programs: prep regular and enriched art.

The prep program for grades 2 and 3 consists of music preparatory classes including one period of recorder class, one period of rhythm class and one period of singing and music theory. Tuition for the prep program is \$35 and includes a recorder and music manuscript book.

The regular program for grades 4 and above will be conducted for students taking a band or orchestra instrument as well as a piano. All instruments will be taught and a student in the program will receive one lesson per day and at least one ensemble experience per day.

The availability of instruments is on a first-come-first-serve basis, Black said. Tuition for the regular program is \$30.

The final segment of the summer music school is the enriched art program for grades 2 and

above which is an expansion of last year's program, Black said. The art class, taught by his wife Kathryn Black, will meet for one hour every day.

Those students returning from last year's program will move up to Level II art projects which includes work with clay, Black said. Sixty-five students were enrolled in last year's program.

An additional \$10 to cover the cost of materials will be charged per art student.

According to Black, this year's summer music school may also include more of a vocal program.

"I'd like to incorporate vocals and music theory classes as well," Black said, adding that no definite plans have been made.

Registration for the summer music school must be completed by June 13. Applications, including tuition, must be returned to a student's school. Checks are payable to the Belleville Board of Education.

For more information contact the student's music teacher at his or her school.

## Board changes meeting to School 5 site

The Belleville Board of Education will meet Monday, May 12, 8 p.m. at School 5. The board was originally scheduled to meet at the board office complex.



Vincent Cozzarelli  
Reg. Ph.

**ABSORBENTS**  
Absorbents are the ingested most for family health. In fact, the counter-top, handkerchief, and they work by absorbing moisture. Because they are so effective, they are used in many areas of the home. They are used in the kitchen, bathroom, and even in the car. They are also used in the office, school, and even in the hospital. They are used in many areas of the home. They are used in the kitchen, bathroom, and even in the car. They are also used in the office, school, and even in the hospital.

**HANDY HINT:**  
Pregnant and to heart disease, available only by prescription.

## Group in its second year

# Winterguard loses championship by only nine-tenths of a point

By Michelle Jeannotte

The Belleville High School winter flag and rifle squad, otherwise known as Winterguard, lost its second season championship last month by only nine-tenths of a point.

The "Squad," "Illusions," was formed last year as a result of student and parent interest, according to Monica Villanueva, the group's adviser. The group began competing in the novice level but moved up to the intermediate level after only three competitions this year, she said. The squad has really improved over the past year, Villanueva said. And losing the championship by only nine-tenths of a point really hurt. We came so close.

Winterguard, which is an extension of the band, consists of flag and rifles squads which perform in a 5-minute routine. Choreographers and instructors for the Winterguard are Pat Salati and Tony Dell'orsano and his wife Vicki, both of whom performed in drill squads while attending high school.

According to Villanueva, the squad performs before a group of judges who award points for general appearance, execution of work, drill and how well members stay within a specific area.

This year the Winterguard performed to a medley of "Can You Feel the Beat" by Lisa Lisa, "Dress You Up" by Madonna, and "Baby You're a Star" by Prince. Costumes for the squad were made by Theresa Bonafante, mother of one of the members.

During the performance, judges record their comments on tapes which are given to the squads for their review, Villanueva said, adding that corrections and improvements are made as a result of listening to the tapes.

A majority of the groups competing against the Belleville High School Winterguard are from Sussex County and New York, she said, including Indian Hills, Lenape Valley, and Ramsey high schools. Not all the squads competing are school-sponsored, Villanueva added, noting that sometimes the Winterguard participates in open competitions in which groups with no sponsors have a chance to compete.

This year the squad finished first or second in competitions.

**Century 21**  
FIRST CENTURY REAL ESTATE  
607 Passaic Avenue  
Nutley, N.J. 07110  
This Coupon Good For 1 Free Market Analysis  
Call: 235-0440

she said, noting that the girls began to practice in January for the season which kicked off in February. It ended with the championships April 26 at Brentwood, Long Island.

Awards presented to the Winterguard this year include three for Best Flag and three for Best Rifle, Villanueva said.

Members of this year's

Winterguard are: Laura DeSimone, senior; Theresa Bonafante, Lorr Tirkel, Hina Taylor, Kelly Ann Phelps, Lori Murphy, Cindy Carroll, Lori Herschell, and Melissa Brauer, juniors; Jennifer May, Andrea Cammarato, Elizabeth Buglio, and Antonia Zangari, sophomores; and Daria DeSimone, freshman.

## School chimney faces structural repairs

An examination of a chimney located on the roof of the old section of the Belleville Middle School has determined that structural repairs are needed.

The chimney, which was reported to be in dangerous condition by Supervisor of Plant Operations Joseph Grande, was examined by an architect and a private contractor last week after the matter was discussed by the board of education at its April 28 meeting.

In a memo sent to Appleton's office, Grande noted that the capping of the chimney's railing was loose and that a piece fell off. He determined it a "dangerous situation" and recommended that either an architect or an engineer examine the chimney.

According to Edward J. Appleton, school board secretary,

no formal plans are needed for the chimney's repair. Both the architect, Richard Beckhard, and the private contractor determined that only the portion of the chimney visible on the roof would have to be repaired rather than the entire structure.

In Beckhard's estimation, Appleton said, since the freezing weather has past and the amount of damage possible decreased, the condition of the chimney does not present an immediate danger.

Appleton said that Beckhard will be sending him the names of masons who repair and restore chimneys so that quotations can be made.

Hopefully the quotations will be low enough that we don't have to out for bid," Appleton said. "That would speed up the repairs."

## Delicious Fruit Bouquets for Mother's Day!

One call does it all

667-6262

Free Deliveries to NY and NJ

All major credit cards accepted

World Famous

**CAPALBO'S**

Gift Baskets

339 Passaic Avenue Nutley, NJ 07110



## Just Mom's cup of tea.

We can write the perfect Mother's Day card.

The Floral Tea and Sauer for Mothers Day. Beautiful flowers, a charming show, a warm tea and saucer. The perfect gift that lasts a long, long time.

Teleflora

Flowerama

180 Washington Ave. Belleville 750-0012

\* All major credit cards accepted in telephone orders \*

## TOWNE DELICATESSEN & CATERERS

650 JORALEMON ST. BELLEVILLE N.J. 751-3935

Week of May 8th thru May 12th

Proudly Presents

## THE DELI SPECIALS

Now Featuring Homemade Mozzarella

1/2 lb. BAKED VIRGINIA HAM \$2.09	1/2 lb. HORMEL HARD SALAMI \$1.83
1/2 lb. ROASTED TURKEY BREAST \$1.99	1/2 lb. SLICING PROVOLONE \$1.48

Party Platters for Communions - Confirmations - Showers - Graduations

Member of Belleville Chamber of Commerce



# Belleville Times

Serving Belleville Since 1909 (USPS 049-220)

Published Every Thursday  
At 155A Washington Ave.  
Belleville, N.J. 07109Annual Subscription \$14.00  
Senior Citizens \$7.00Second-Class Postage Paid  
at Newark, N.J.  
Postmaster: Send address  
changes to The Belleville Times  
155A Washington Ave., Belleville, N.J. 07109Publisher: Frank A. Orechio  
Editor: Michelle JeannotteTo report news and other items  
of interest, call:

759-3200

## The Shades of Spring

The trees turn green — Oh  
What a beautiful sight to be seen  
The Robin with its breast of Red  
This God's creation, it has been said  
The skies of a heavenly Blue —  
It's a blessing to see that hue  
The spring season is in the Pink  
As the little Grey squirrel gives you a wink,  
Daffodils not in their color of Yellow  
I hear the whistle of a little fellow  
The world awakes in its "Shades of Spring".  
Thank you, Lord for the joy it brings!

By Anna Rosa Mazur  
Belleville

## School board budget

Well, it happened again. Belleville Township Commissioners have been obliged to address the question of a reduction in the school board budget which was rejected by voters at the April election.

The original budget of \$19,300,000 has been reduced by \$270,000 — which equates to six tax points. \$180,000 came out of the capital outlay budget — monies that were originally appropriated to rehabilitate the middle school. Current expenses account was reduced \$90,000.

The cuts mean that some major repairs to the middle school will have to be postponed until next year — or the year after — at an increased cost. As to the \$90,000

reduction in the current expense budget, the school board will be obliged to make cuts that have the least impact upon the educational programs. After all cuts, the board of education budget reflects a 19 tax point increase over last year.

Belleville is blessed with school board members that are responsible and dedicated to quality education. The record shows they have been stingy with taxpayers' dollars. There is no money for frills in the school system.

The cuts will not do substantial harm to quality education available to our students. A prudent township commission acted responsibly in producing budget cuts with the least harm to the school system and our students.

## Special Education

Recently, the Belleville Board of Education adopted a resolution joining the New Jersey School Board Association in designating May 11-17 as Special Education Week. The week has been set aside to recognize the efforts of both special education students and staff members. In Belleville, there are approximately 386 students in special education programs.

A primary objective of the program is to make each individual, self-sufficient, self-sustaining and, in the process, gain a large measure of personal dignity and self-esteem. This is the second

consecutive year that Special Education Week has been observed statewide. Last year, the program was initiated when Gov. Thomas Kane signed a proclamation. Gov. Kane signed another proclamation this year.

Those among us who have no need for special education attention should not only pray for the blessings bestowed upon them by our Lord, but also take time out of their busy lives to attempt to be helpful directly or indirectly to those less fortunate than they. Belleville can be proud of its efforts in behalf of our 386 special education students.

## First DeWitt

Hats off to the leadership of the First DeWitt Savings and Loan Association. Recently, under the leadership of Chairman Michael J. Quigley and President Robert K. Hicock, the association reached an all-time record increase in assets.

During the association's 100th anniversary year, First DeWitt's assets grew \$54 million — a lot of money in anybody's language. Mr. Quigley disclosed the association paid \$23 million in dividends during the year. First DeWitt also broke a profit record — reporting

record earnings in excess of \$3 million. In terms of profitability, progress and growth, 1985 has been the best year of the 100-year history of First DeWitt, according to Mr. Hicock.

First DeWitt now operates 10 offices.

First DeWitt is one of the strongest federally-insured savings institutions in New Jersey — a result that can be attributed to a century of conservative management policies. Congratulations, First DeWitt — you have been, and are, a credit to our community.

## One-sided view attacked

To the editor:

Over the last couple of months, I have seen this town hall complex come to life on only one-sided view — the opening side. I kept quiet not to say anything and watched the staged hycenas put on their show. After reading Mr. Gary Bell's letter last week, I would like to point out my view of what is happening. Mr. Bell doesn't tell you one important fact: He supposedly turned down \$125,000 from a person to buy his property hoping the town would give more.

Mr. Frantantoni carried a sign "schools first." Well, April 15, 1986, the townspeople said no schools first. I attended every town meeting since May of 1983 and when this bond was passed, Mr. Frantantoni didn't say a word. Do we need a town hall? We sure do. If for one reason alone is to stop Belleville from going like Hillsdale, Irvington, East Orange, South Orange, and Bloomfield. Look at the crest of the towns that border Newark, all are shot from the city line. We've been lucky. Your house is worth \$100,000 to \$175,000. But if our border goes, then your house will be worth \$17,000 or less.

Mr. Frantantoni said there is no crime in North Newark, he's nuts! If he thinks there isn't, people should see or hear half of what happens. People are being pulled out of their cars on 2nd and Broadway and beaten to a pulp at 3:30 p.m. A Belleville man was murdered at McArthur Highway and Route 280, a bank teller was also beaten to a pulp at Vernona and Broadway at 4:00 p.m., and you people bood the police when they tried to talk. I saw Mr. Richard Yanuzzi running around egging people on to yell and boo. He said yell in an orderly manner, what a statement! But the voters took care of him on April 15, 1986, he lost bad.

Mr. Frantantoni does not speak for all of Belleville. I was in a bar a few weeks ago and a kid came in to get signatures against town hall. I said how did you get that petition? He said that they gave him a list of names. I asked a little girl who was shouting, "One two three four kick the mayor out the door." I asked if she knew who he was and she said, "No. Laws told to say that." Nips! I know how Sung Yang Moon does it.

You people must realize that we have to pay now or we will pay later. Ask the

people at North Newark, Broadway and Grafton, they took out the Police Department and the area fell. Also people like Mr. Vander Zwan and Mr. Veneziano haven't been to a town meeting in four years. We don't need a town hall that's why you have to meet at the high school to hold you.

People wake up! Mr. Pizzi, Mr. Marotti, Mr. DiRuggiero, Mr. McGreevy all own homes in Belleville. As far as making money on this deal, let the one who says it prove it. Last Thursday I was to get in front of the Nutley Zoning Board for a variance. My lawyer couldn't make it so we had to postpone it. I sat in the back to see the objectors leave and one old man said "look, see someone is getting paid on this. It can barely afford to open up let alone pay someone off."

I have been a crutch for years and there's a lot more than the town hall you can scream about. If the commissioners decontrol rent, let all the three and four room and basement apartment stand and reevaluate the homes. It would bring in about \$2,000,000 a year and help the single and two family homeowner. Then "all we need is \$8,000,000."

If you don't show faith in town and build the town hall complex, we will surely fall by the way of Newark. You'll wake up one morning and find people sitting on your porch to tell you to sell.

Look at all the facts, ride through North Newark. Mr. Frantantoni stand at McArthur Highway and Grafton at 11:30 p.m. and see it's like William Street and Washington Avenue.

Seniors, remember you followed before and rose up against your senate citizens housing and now you have nothing. Mayor and commissioners if you don't think the silent majority still runs Belleville, how come the three can dilute the mayor, supported with 2nd and two who were against the town hall and lost bad.

We may now or we may not be able to pay later.

To all the people who were so rude to tell me who tried to speak to move it, if we don't like it here, let's should move. Homes in Newark East Orange, Paterson, sell for about \$150,000 to \$200,000. We don't need you. We don't want you.

Kevin G. Kennedy

## Frantantoni responds to letter

To the editor:

Last week, a Ms. Virginia Hanley wrote a letter criticizing me and many citizens of our town who were participating in a democratic process called a "town meeting." Her 200 words were more than better spent giving us clear facts and figures on why she feels we need a \$10 million plus triangular white elephant.

Ms. Hanley, the commissioners were not treated shamefully, rather they shamelessly refused or were unable to answer most questions put to them. And no one prevented proponents of new municipal facilities from speaking. Maybe you weren't listening, but I've stated on many occasions that I and my fellow citizens support a new police station and sufficient accommodations for our town agencies. What we insist on is that it be done within reason and within the ability of our citizens to pay.

Mayor Marotti has never refused to allow a citizen to speak. So if you had

raised your hand, I'm sure he would have called on you and everyone could have heard your comments.

As far as my architectural and fiscal background, you are "bribe" informed. My phone number is 759-4111. If you would care to call me, I will tell you my education, background and business experience.

In answer to your question "Where is Civic Pride?" I'll tell you where it is. It's in the hearts of the thousands of people who have patiently involved in our government process in the past year. This past week we have officially incorporated a citizens group called "Concerned Citizens of Belleville." We hope and pray you will join our organization. I personally invite your participation and input. We welcome all residents who care about Belleville's future.

Thank you for your concern.  
Vincent J. Frantantoni  
Mr. Prospect Avenue

## Senior citizens are forgotten

To the editor:

The board of commissioners in the Town of Belleville seem to be more concerned with beautiful working conditions than they are in the living conditions of Belleville senior citizens. I thought their job was to work for the people and not just to work for the

The \$10 million municipal complex will not put a roof over the heads of many of our town's senior citizens who are finding it more difficult to keep their homes in Belleville due to the soaring tax rates. Many would like to remain in Belleville close to family and friends, but

must move to other areas because Belleville does not have senior citizen apartments for them to move into.

An announcement was made months ago that had been donated for the construction of its project here in Belleville. The mayor had been promising this. Bloomfield, Nutley and Newark were able to provide housing for their senior citizens. Why not Belleville?

Where are the city's plans for this building?

Miss Chloé M. Datto  
Sycamore Drive

## Mother, daughter share the fun

To the editor:

As the mother of a 4-year old, I am always looking for something that is really enjoyable for us to do together. I would like to share an experience that we have come to feel truly a part of.

A group of wonderful and talented youngsters called PRO KIDS are children 6-17 years old who have professional stage and or screen credits to their names. They assemble twice a week at a place called Something Different on Church Street

in Montclair. For one hour they sing and dance their hearts out. They make you laugh, they make you cry. They are a tribute to their parents and most of all to themselves.

In this day and age of changing morality and choices, it is truly refreshing to see such wholesome children as they are. If you're looking to raise your spirits and hopes, do it with PRO KIDS. They are a real inspiration.

Polly Spencer  
Belleville

## Golden Comments

By James R. Golden

What the break-up of AT&T and its rate cut really means to the residential phone subscriber is really bad news. Back in 1984 the unlimited residential phone rate within the zone was \$2.50, going up to \$2.75 in the middle of the year.

Along came the Federal Court ordered break-up designed to open up competition, placing control of the communication industry under the Federal Communications Commission (FCC) to which President Reagan appointed Mark Fowler as its chairman.

Everything changed — new long distance carriers MCI, GTE, Sprint, Tritel of Belleville and others got into the act. Many bought their phones to invest higher retail fees, but they must maintain them, while local rates creep higher.

Then the great netizens' access charge was imposed upon all phone customers. In the FCC cash and carry month, whether the long distance network is spot or flat, that access charge was \$0.05 per minute. It was expected to go up to \$0.33 next year. It is presumed that it is the ultimate design of FCC to impose a \$1 a month access charge. If Congress can prevent this by legislation, it's a vicious "trapoff" designed to encourage more long distance usage. It is not how long you talk, but whether you talk at all.

American Telephone and Telegraph Co. (AT&T) recently announced a \$1.4 billion rate cut designed to lower prices in the long distance carrier market and raise them in the local market. By means of the National 10 per month plan, the residential phone companies, then offering long distance rates, will offer long distance rates, making the "suckers" paying for the long line users while we don't even use the damn access connection.

AT&T's rate change is meant to counterbalance the increase in revenue from the commission's 10-month access charge in order to prevent the companies from going over the earnings limit set by federal regulations. Why don't they lower the residential customer's monthly service charge the same amount as the increase in the access charge?

Starting this year, long distance customers will pay \$1.00 per month for access to the nation's long distance telephone networks, regardless of how much or how little they make long distance calls — an inequitable unfair system that a Congress must put an end to.

At the same time, The National Exchange Carriers Association (NECA) — the Pariparty based operation that handles a revenue sharing pool to help operating companies connect calls in the long distance network will reduce its fees approximately 9.5 percent while the residential users' access charge doubles (or worse) every other expense — this time, less than highway tolls imposed by the FCC to benefit "the business" at the expense of "the public" guy.

Where are our Congress people to allow such a "rape" of one billion customers to subsidize big corporations? Write Senator Bradley and Congressman and Congressional Rye and Rodino, also Senator Gore who is calling for the end of the access charge.

The current volume rate toll reduction of 25 percent and the access charge are relatively unimportant to all long distance carriers. They can keep this money or pass on the savings to their customers or do anything they want with it — our money.

AT&T spokesman John Skalko says, "We're taking all of the cost savings that we experience and passing them onto long line customers. We're required to cut our rates as the access charges go up." Yeah, as the residential phone user pays for the whole thing, it stinks. Remember, only Congress can put an end to this "rape" of the American residential phone owner. Kick the butts of the Congress people who don't respond to the outspoken demand of the people to end the access charge.

The break up of AT&T was one of the most flagrant mistakes of the Reagan Administration and the man in the street is paying for it — you and all the rest of us.





Poster Winners—Winners of the Spring Concert Poster Contest, sponsored by the Belleville High School Music Department are: Richard Borjarno, first; Cathy Battista, second; and Rory Wells, first. Borjarno and Wells will receive \$50 and Battista \$25. With them is Edwin C. Black, BHS music teacher.

# Rent Leveling Board awards rent overcharges to tenants

By Christopher Bilant

Six tenants of Bridgetown Apartments in Belleville, who awarded a total of \$1,044 for rent overcharges, came to April 29, 1984, at a hearing of the Rent Leveling Board.

Gregory A. Adams, 314 Prospect Street, the landlord, the Bridgebrook at the time, of the overcharges, was not present at the hearing. Adams' attorney, Mary Leonard, advised that Adams had been notified by the Rent Leveling Board of the hearing and that Adams had failed to appear.

Adams' attorney, Mary Leonard, advised that Adams had been notified by the Rent Leveling Board of the hearing and that Adams had failed to appear.

# Activist group makes list of eight recommendations

(Continued from page one)

The CUB spokesman added that concerned Belleville residents interested in joining the activist group could call 739-4141 for further information.

By Christopher Bilant

The CUB spokesman added that concerned Belleville residents interested in joining the activist group could call 739-4141 for further information.

## Mother's Day Specials

MOTHER'S DAY MENU 1986	
APPETIZERS	
Mussels in Sauce	\$5.25
Artichoke Hearts Francise	2.50
Cold Antipasta	5.45
Tricolor Branzino	4.50
Carb Bread	1.75
SOUPS	
French Onion	1.95
Lobster Bisque	2.50
ENTREES	
Flounder Broiled	8.95
Flounder Stuffed	10.95
Shrimp Parmesan	11.50
Shrimp Marsala	11.50
Chicken Parmesan	10.95
Chicken Murphy (hot or sweet)	11.95
Chef Special (chicken, veal, shrimp, peppers, onions, mushrooms)	14.95
Veal Marsala	11.95
King Crab (in shell)	14.95
Filet Mignon	15.95
Prime Ribs	14.95
DESSERT	
Carrot Cake	2.50
Apple Crunch	2.25
Sides Included	
Children Menu Available • Seatings at 1 p.m., 3 p.m., 5 p.m. & 7 p.m. • Reservations required	

Allen's Place  
522 Franklin Ave. Nutley  
667-9898

# At Nutley Savings 'Home Improvement' Is A Household Word

John V. Kelly, President

**"We've built our reputation by helping families"**

At Nutley Savings, Home Improvement is serious business. After all, we built our reputation helping families buy their homes and improve their property.

From our humble beginnings in a local schoolhouse, one hundred years ago, Nutley Savings has grown into one of New Jersey's largest savings and loans, today serving 22,000 depositors throughout the area with assets approaching a quarter of a billion dollars.

"We're proud of our history and proud of our service to our community."

Our institution was built by long-time area residents who wanted to accomplish something special: thriving places to live and to do business in neighborhoods we can be proud of for generation after generation.

Our goal is to continue to provide friendly service to our community.

**"We're out to double our home improvement loans this year."**

Last year, we doubled the amount of home improvement money loaned to qualified borrowers and this year we're out to double it again.

"So if you're looking to nail down a home improvement loan, our rates are competitive with any lender in New Jersey. Our experienced loan officers are ready to help you cut through the paperwork so that you can get on with the serious business of improving your home."

Whether your plans call for a new addition, a remodeled kitchen, an extra bath, a pool, deck, or a landscaped lawn, plan on calling us. At Nutley Savings, Home Improvement is a household word.

## Nutley Savings

AND LOAN ASSOCIATION

celebrating "Our first 100 years"

MAIN OFFICE: 371 Franklin Avenue • Nutley, N.J. 07110 • 661-3200  
BRANCH OFFICE: 221 Washington Street • Newark, N.J. 07102 • 623-7080



# Citizens say no to town hall; support police HQ expansion

(Continued from page one)

not help revitalize Washington Avenue, once shopping as the township's only shopping district. Only 27 citizens believe that the new town hall will help revitalize the avenue.

Along the same lines, 57 citizens do not believe developers would be interested in building on Washington Avenue as a result of the new town hall complex as many proponents of the project believe. These citizens believe that getting property owners to fix their facades would be enough to bring about a new look to the avenue. Some also believe that new stores like ones we had 10 years ago would help the avenue's revitalization process.

Twenty-eight citizens do believe developers would be interested in building along the avenue once the new town hall complex is constructed. They believe that if one project, such as the town hall complex, were begun, others would follow. According to one citizen, developers go where the action is.

Others believe the new town hall complex would make the avenue more desirable for new business because it would help provide a better atmosphere and improve appearance.

One strong belief of proponents of the \$10 million town hall project is that if the township shows a commitment to revitalizing Washington Avenue, developers, as well as new businesses, will feel secure about the avenue's future.

As one citizen said, "It's a step in the right direction."

Many citizens would like to see more stores with better parking facilities along Washington Avenue. Most of them express their preference to shoe and clothing stores rather than more pizza parlors, bars and liquor stores.

People responding to the survey also expressed their belief that the township needs more trees like its neighboring towns. The planting of more trees, along with facelifts of properties on the avenue, would give back the look Belleville once had, they said.

As far as the use of buildings are concerned, some believe that the township should encourage landlords to upgrade their apartments and increase rents to encourage higher income families to move in to Belleville. Others believe combination projects, called "mixed use," should be put along Washington Avenue. These projects are ones in which office and living space are contained under one roof.

Although some support a new municipal complex and expansion to police headquarters, how much are taxpayers willing to spend? That is a question most people preferred not to answer, either because they believed they weren't qualified or because they were undecided. However, a majority of them only believe \$3 million is a reasonable figure for such projects. The second most

reasonable figure, decided by 26 citizens, was that of \$2 million. No responses were in favor of the \$10 million figure proposed by the board of commissioners. One citizen even said \$500,000.

Alternatives to the \$10 million town hall project include an expansion of town hall and keeping the Public Works and Public Affairs departments where they are, renovating current facilities, complete use of School 1, only a new police headquarters and courtroom, or build an additional two floors and renovate current facility.

Other issues citizens believe the board of commissioners should concentrate on include: keeping taxes low, more foot patrols on Washington Avenue, more facilities for children to play including a recreation center and swimming pool, better sanitation department, less condominiums, senior citizen housing, repairs to the middle school, repaving of streets, education, clean water, better sewerage system, and making sure town employees put in a full work day.

Although citizens believe there are other issues the board of commissioners should concentrate on, some of them also believed that it should stay firm on the new town hall project.

"Do not back off," one citizen said.

# Carolyn Rizzolo is selected 'Outstanding Young Woman'

By Daniel Shure

What will a near perfect grade point average get for a young woman graduating college today? Combined with a talent for composing songs, playing guitar and membership in a national honor society, it got Carolyn Rizzolo of Bridge Street named to the most recent edition of "Outstanding Young Women of America."

The 21-year-old St. Peter's College senior was selected for inclusion in the 1985 edition of "Outstanding Young Women of America." Now in its 21st year, the program honors women between the ages of 21 and 36, who have distinguished themselves in their homes, professions and communities.

A member of Alpha Sigma Nu, a national Jesuit honor society, and Delta Alpha Kappa, a theology honor society, Rizzolo has maintained a 3.9 grade point average (G.P.A.) out of a possible 4.0 at St. Peter's. In her major, economics, Rizzolo is graduating this month with a perfect 4.0 G.P.A. average.

Following graduation, Rizzolo hopes to get into bank auditing, though she did not want the idea of a professional music career.

"I've quite often thought of it as a music career, but I've tried to set more realistic goals," she said.

Rizzolo writes songs, "mostly love songs," that she sings "to anybody who will listen to them."

Anybody who will listen includes parents, Jane and Carol Rizzolo, four brothers and sisters, some older and some younger than she, and a boyfriend, Al from Jersey City.

Through her song lyrics, Rizzolo said she tries to reach people in troubled circumstances and let

them know that they are not the only ones who are there or have been there. Like Barry Manilow, one of her favorite song writers, Rizzolo said she tries to relate to listeners. "You're not the only one in that situation. You're going to live through it like thousands of people before you."

A graduate of Our Lady of Good Council High School in Newark, Rizzolo remains involved in church activities. She is a eucharistic minister at St. Peter's Church on William Street, giving communion at Mass. Rizzolo also leads a folk guitar group playing in church.

In addition to writing songs, she has written poetry that was published in Pavan College Literature Magazine and is a member of her class yearbook staff.

Using the same accounting skills as at her part-time job, Rizzolo is financial secretary for the Columbian, the female counterpart to Knights of Columbus. Rizzolo works part time, adjusting reports for Edison Parking Corp., Newark.

"I just audit reports and make sure there are no mistakes," kind

of like the IRS," Rizzolo said of her job.

Asked if there is anything that she can not do well, Rizzolo laughed and said, "I guess I'm too young to have had any major failures."

Also named to "Outstanding Young Women of America," but unavailable for comment this week, is Jeney P. Gerard of Belleville. The two local women are among 26,000 Americans to be listed in the volume, which will include biographies.



Carolyn Rizzolo

## Rabies clinic this Saturday

The Belleville Health Department will conduct its annual free Rabies Control Program Saturday, May 10, from 10 a.m. to 12 p.m. at 283 Washington Ave.

According to Thomas J. Longo, health officer, the following procedures will be implemented:

- Dogs vaccinated during the 1985 Rabies Clinic will require no vaccination.
- If a dog was vaccinated at last year's clinic and was in the age range of 3-11 months that time, a rabies vaccination will be required.
- Dogs vaccinated in 1984 will not require vaccination.
- Dogs vaccinated in 1983 will not require vaccination.

# John DeCesare accepts position in Cedar Grove school system

John DeCesare, Nutley's assistant superintendent of schools, will be leaving the system June 30 to accept the superintendency of Cedar Grove public schools.

DeCesare, who served four years as Belleville High School principal prior to coming to Nutley, will succeed retiring Cedar Grove Superintendent Kenneth Bechtold.

His appointment came by unanimous vote of the Cedar Grove Board of Education and carries a starting salary of \$64,000, increasing to \$68,500 in the second year.

"Dr. Fadule (Superintendent of Schools) made my promotion possible and I feel very confident that the lessons and concepts I have learned here (in Nutley) along with ideas of my own can be put to work in improving Cedar Grove's already excellent school program," DeCesare said.

There has been no public discussion by the Nutley Board of Education concerning a successor to DeCesare. An often mentioned likely candidate in educational circles the past week is Dr. Frank Votto, principal at Nutley High School. Were Votto named the assistant superintendent, a new principal would also have to be appointed at Nutley High.

DeCesare, meanwhile, says he's already looking forward to his new post in Cedar Grove. Although he doesn't formally begin work there until July 1, he already is spending some evenings in familiarizing himself with the Cedar Grove staff and method of operations.

"When anyone goes into school administration, the ultimate goal is to become a superintendent. I'm excited because now I have the chance to reach that goal," DeCesare said.

Cedar Grove has a population of approximately 13,000 and a school enrollment of 1,300 compared to 3,800 students in Nutley. Cedar Grove operates three K-8 elementary schools and a four-year high school.

DeCesare's credentials include a total of 10 years as a high school principal and 10 years as a classroom teacher. He served as curriculum coordinator and assistant principal. He has also been a college instructor at Penn State University, Lafayette College and Reading Community College.

DeCesare is a graduate of Moravian College, Bethlehem, Pa. He completed graduate work at Lehigh University. DeCesare has served as chairman of the Middle States Association of Schools and Colleges and is the former president of the Essex County Assistant Superintendents' Council. DeCesare also serves as an advisor to the N.J. Department of Education's Academy for the Advancement of Teaching and Management.

A resident of West Milford's Greenwood Lake section, DeCesare is married, and his wife, Cassandra, a sales executive with the Cabot Corporation, have two sons, John and Steve, both students at the N.J. College of Medicine and Dentistry and graduates of Belleville High School.



John DeCesare

## BACK PAIN NECK PAIN IT COULD BE PINCHED NERVES

- Pinched Nerves May Result In:
- HEADACHES
  - LEG PAIN
  - DIZZINESS
  - NUMBNESS
  - SHOULDER PAIN

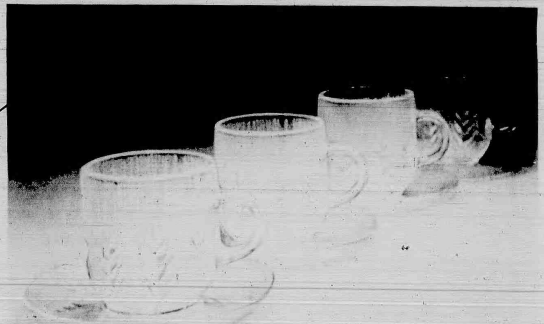
WHY SUFFER NEEDLESSLY? A SPINAL EXAMINATION CAN REVEAL IF YOU HAVE PINCHED NERVES

Most Insurances Provide Coverage Health (Major Medical 80-90%) Liability (Auto, Accident 100%) Approved Workman's Compensation for job injury (100%)

Bloomfield Chiropractic Center 858 Joralemon St. Belleville 759-3600

Dr. Susan Guarino D.C.

## Our new VACATION CLUB is your cup of tea.



## Join Now and get a Free Gift plus a Week's Bonus!

This 8-piece set of break resistant clear glassware by Arcoroc is yours absolutely free right now when you open a new Spencer Savings Vacation Club for \$5-\$10 or \$20 weekly. Handsomely patterned in Country Wheat, and specially treated for durability it will lend a touch of class to any table setting.

And, come next year, you'll receive all you've saved plus a Week's Bonus on your completed Club!

So, choose the weekly amount that suits your vacation needs best and start your Club today. Remember, Spencer Savings is your cup of tea when it comes to pieces to see!

(and one free gift per person, while supplies last)

# Spencer Savings

and Loan Association

GARFIELD • LODI • WALLINGTON • SADDLE BROOK • CLIFTON • LYNDHURST • BELLEVILLE  
PHONE NUMBER FOR ALL OFFICES • 772-6700

Your Savings Insured to \$100,000

**POSSIBLE SIGNS OF PINCHED NERVES**

- Headaches/dizziness
- Numbness
- Neck pain/tight muscles
- Shoulder pain
- Pain down the arms
- Numbness in hands
- Low back pain/tip pain
- Sciatica
- Leg pain/numbness

**EMERGENCIES TREATED ANYTIME**

**MOST INSURANCE ACCEPTED**

**FAMILY FEES AVAILABLE MOST INSURANCE ACCEPTED**

DR. PAUL J. DOMALO

759-3600



## Art & man at BHS



Art and Man - Students in Mr. Christian's art and Man 2E class at Belleville High School recently completed two life-size sculptures. Christian and two of his students, Christine Hahn and Fran Gabriel, stand by one of the sculptures, which are hanging on in the school auditorium. Students who worked on the sculptures included Dave Mackenra, Melissa Weaver, James Petre, Thersel-Jackson and Carolyn Rogers. Photo by Michelle Jeannotte.

# Radio broadcast signals 6 million to join hands for America's needy

By Christopher Bilani

At 3 p.m. E.S.T. on May 25, a nationwide network of radio stations will broadcast a very special cue signaling six million people to come together in a dramatic human chain.

The project, called "Hands Across America," will pass through 39 states, including four miles of Essex county, enroute to raising a projected \$100 million for America's needy.

Bonded both by the clasp of hands and the common goal of helping the homeless and hungry, they will sing in nationwide unison "America The Beautiful," "We Are The World," and "Hands Across America," the commemorative anthem.

The Hands Across America chain was conceived by Ken Krager of Los Angeles, according to New Jersey Hands Across America Director, Ann Cooper.

Krager is well known for his work as president of U.S.A. For Africa, the group that raised

millions for the poor world wide through the transatlantic "Live Aid" concert in Philadelphia and London, the "We Are The World" recordings and many other worthy endeavors.

With Hands Across America, however, the goodwill is targeted for the poor here at home.

"This is going to be a once in a lifetime event," Cooper said, "and I can't imagine any place more wonderful to be on May 25."

Helping to forge the charity chain are some famous celebrities from the worlds of politics, Hollywood, and professional sports.

Bill Cosby, Lily Tomlin, Kenny Rogers and Pete Rose are the national co-chairpersons, while Arizona Governor Bruce Babbitt and our own Governor Thomas Kean head the gubernatorial committee.

The job of the governor's committee is two fold. They are to provide state police, protection and regional cooperation within their own state and promote the same

through governors in other states. Steve Faber, Director of Project Development for the Kean Administration explained that Governor Kean is doing everything possible "to insure the success of Hands Across America."

According to Faber, the governor praised the project, calling it "a tremendous effort that everybody should participate in."

At least 100,000 New Jerseyans are needed for a complete line through the state.

The Hands Across America chain will begin in Manhattan, cross the George Washington Bridge and proceed through the Bergen communities of Fort Lee, Leonia, Bogota, the Hackensack, Hasbrouck Heights, Wood Ridge, Carlstadt, the Rutherford, Lyndhurst and North Arlington.

From there the chain will continue through the Hudson community of Kearny, East Newark and Harrison and then cross the Passaic River into Essex.

The chain will pass through four miles of Newark and exit the county via Hillside. It will then proceed through Elizabeth, down Route 27 into Princeton and then it's on to Trenton, Pennsylvania and, ultimately, California.

The New Jersey headquarters for Hands Across America is in Newark at the Gibraltar Building on Halsey Street. Cooper thanked Prudential Insurance Corp. for "donating office space, equipment

and office furniture" and 3-M Corporation for "donating copying equipment."

Belleville residents wishing to participate in Hands Across America may do so by dialing toll free 1-800-USA-9060. Also, forms are available at McDonald's restaurants, and on Coca Cola point-of-purchase displays at area supermarkets. Forms will also be available with billings sent out by J.C. Penney and American Express.

In addition to participation in the historic event, a \$10 donation to the cause entitles contributors to a commemorative certificate. A \$25 donation includes the certificate and a Hands Across America t-shirt. A \$35 donation includes the certificate and the t-shirt plus a Hands Across America sun visor and lapel pin.

Cooper said that participants in the project would be assigned to specific blocks to report to in order to insure a complete chain. She added that people could request the area where they wanted to be positioned, such as in or near their hometown.

When asked if she felt confident that the Hands Across America chain would be complete and uninterrupted from sea to shining sea, Cooper paraphrased the popular Beatles song of a generation ago.

"I think it will 'come together' all across the country," she said.

## Belleville Education Assoc. honors four retirees May 20

The Belleville Education Association will honor four retirees Tuesday, May 20, 6 p.m. at the San Carlo Restaurant, Lyndhurst.

Honorees are Ethel Williamson, high school; Mary Hoy and Angela Immediato, School 7; and Marian Gurewitz, Special Services.

Tickets are \$15 each and are available through Eleanor Arthurs of School 8 at 450-3480. Mail orders will be filled promptly.

## School lunch menu

The following is a schedule for daily lunch programs for students attending Belleville schools for the week of Monday, May 12 through Friday, May 16.

**Monday, May 12**  
Elementary schools: hot dog or Salisbury steak with oven fries, peas and carrots, cookies and milk. Secondary schools: hambo on a long roll or pizza or hot dog with french fries, apricots and milk. Sub-base combo: pepperoni and cheese.

**Tuesday, May 13**  
Elementary schools: turkey and gravy or Swedish meatballs with mashed potatoes, fruit cup and milk. Secondary schools: chicken parmigiana or toasted cheese sandwich or pastrami on rye with corn, potato chips, fresh fruit and milk. Sub-base combo: turkey.

**Wednesday, May 14**  
Elementary schools: fried chicken or torpedo sandwich with hash browns or french fries, frozen juice-pop and milk. Secondary schools: ham and Swiss quiche or pepperoni pizza or roast beef on a Kaiser roll with potato rounds, cookies and milk. Sub-base combo: cold cut combo.

**Thursday, May 15**  
Elementary schools: cheese

pizza or beef and cheese on a bun with fresh fruit, juicy treat and milk. Secondary schools: cheesesteak on a roll or beefaroni or pork roll on a bun with green beans, potato chips, sliced pears and milk. Sub-base combo: bologna and cheese.

**Friday, May 16**  
Elementary schools: cheeseburger or chicken filet with french fries, green beans, doughnut and milk. Secondary schools: chicken nuggets or pizza or barbeque sausage pattie on a bun with french fries, sliced peaches and milk. Sub-base combo: tuna sub.

## Fashion Decorated Sweats

Uniquely Designed For The Fashion-Conscious Individual

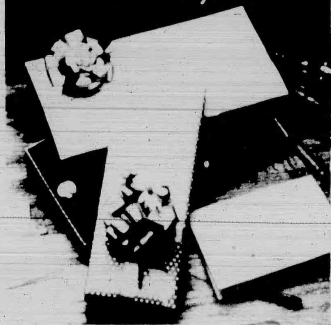


## Factory Sweat Boutique

81-83 Franklin St. Belleville (Silver Lake) 751-2984

Wed. thru Sat. 10-5:30 p.m.; Fri. 10-7 p.m.

## On Mother's Day



## ROSSMORE PHARMACY

338 Washington Ave.  
Belleville 759-1956

## Celebrating Our 2nd Anniversary

Thursday, May 1 through Monday, May 12

### SUITS

Reg.	Now
265.00	212.00
275.00	219.00
325.00	279.00
400.00	319.00

### SPORT COATS

Reg.	Now
150.00	119.00
195.00	155.00
235.00	189.00

### DRESS SHIRTS

20% OFF

Featuring:

Christian Dior, Adolfo, Italia, Stanley Blacker, Lanvin, Thomas Anthony, Givenchy



## Plaza men's store

"The Alternative"

363 Franklin Ave. Belleville • 759-0019

(At Channel Plaza Shopping Center)

Hours: Tues.-Sat. 9:30-6; Mon. & Fri. 9:30-9



**MERLE NORMAN MERLE NORMAN MERLE NORMAN**

Start summer with the look that's going places.

**BEAUTY ON THE GO**

A \$20 value, this colorful summer beauty kit is yours for only \$1 with an \$8.50 purchase of Merle Norman cosmetics, while supplies last. Bring this ad to your participating Merle Norman Studio between April 11 and May 31, 1986.

**Merle Norman**

281 Franklin Ave. Nutley • 667-1778

Gift Certificates Available For Mother's Day

Hours: Monday 10:30 am-9 pm; Tues.-Thurs.-Fri. 10:30 am-6 pm; Sat. 10 am-5 pm • Closed Wednesdays

Free Parking In Rear

**מסכה מרל נורמן מרל נורמן מרל נורמן**



# Squads demonstrate routines in annual Band Show

Photos by Michelle Jeannotte



Linda Pissott leads the twirlers.



Marina Piserchia sings "Fame."



Gabe Nazzola on the trumpet.



Winterguard performs exciting routine.



Brian Dullaghan

## ESSEX PHYSICAL MEDICINE & REHABILITATION SERVICES



- Monir Fahmy, M.D., Diplomate, Board of Rehabilitation Medicine
- Don Jannicelli, Registered Physical Therapist
- Aiman Ragi, Registered Physical Therapist

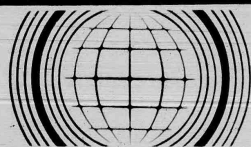
The office is equipped with the latest physical therapy equipment to treat a broad spectrum of physical disabilities.

- neck and back problems
- stroke
- arthritis
- auto accidents
- work & sport related injuries
- pain control

332 Bloomfield Avenue  
Bloomfield, N.J. 07003

Please call for appt.  
743-8717

Flexible hours  
6 days a week



REALTY WORLD.

**THE RESULTS PEOPLE.**  
BAUMGARDNER AGENCY



**BELLEVILLE  
A MUST SEE  
JUST REDUCED  
3 BEDROOM COLONIAL**

Located in the White Oak section, features include a living room with fireplace, eat in kitchen, sun room, parquet floors, chestnut trim, stairs to floored attic. Home protection plan in effect, affordable at \$159,900.

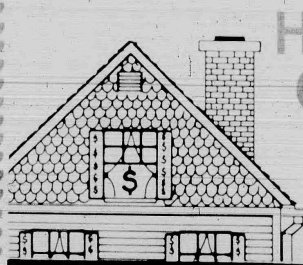
Covering  
Bloomfield - Glen Ridge - Nutley - Belleville  
378 Broad Street, Bloomfield, N.J. 743-8382

**FAST ACTION— ONE WEEK APPROVAL!**

**SPECIAL  
LOW RATE**

**NO LEGAL FEE!  
NO APPRAISAL FEE!  
NO POINTS!**

**Only  
The Bank with Heart  
gives you H.O.P.E.™**



**Home  
Owner  
Preferred  
Equity**

H.O.P.E.™ is your personal line of credit from The Bank with Heart. It lets you turn your house into cash—for any purpose. Call our H.O.P.E.™ line for more information.

**FOR FAST ACTION,**

**CALL TOLL FREE 1-800-THE-LOAN**

**THE TRUST COMPANY  
OF NEW JERSEY**

THE BILLION DOLLAR BANK WITH HEART

THE TRUST COMPANY OF NEW JERSEY • Executive Office: Journal Square, Jersey City, NJ 07310-4200  
Offices throughout Bergen, Essex, Hudson, Middlesex, Morris & Passaic Counties • Assets Over \$500 Dollars  
CLIFTON • PASSAIC PARK • NUTLEY • BELLEVILLE • LINCOLN PARK • LITTLE FALLS • WEST PATERSON



# Belleville High School students sing and perform

Photos by Michelle Jeannotte



Andrew Silbert strikes up the band during a performance at the Belleville High School's annual Band Show this past Friday night.



Geraldyn Rogers sings "Come in from the Rain" during a solo performance this past Friday night at the Belleville High School's annual Band Show.

## Students receive Presidential Academic Fitness Awards

Forty-four Belleville High School seniors were recently presented with the Presidential Academic Fitness Awards.

They are: Susan Aschauer, Monique Bowie, Shannon Cerza, Lenore Chieffo, Barbara Coppola, Emilio Cordova, Chris DeAngelis, Denise DeBenedetto,

Michael DiChiara, Felicia DeDuca, Laura DeSimone, Hany Ellibel, Chris Fetch, Karen Fudis, Maria Garcia, David Harrison, Claudia Hartmann, Dana Italiano, Georgena Janowski, Desiree Johansen, and Colleen Kelleher.

Also: Claudia Lara, Melissa,

Layne, Christine Lehmann, Jill Lillis, Steven Lufante, David Macheska, Domenick Mastro, Linda Matto, Laura Messito, Traci Nanni, Tia Narciso, Christopher Nardone, Karl Penninger, James Petrat, Linda Pissott, Steven Platt, Vincent Puccio, Cathy Rossi, Sharon Russo,

Maria Sese, Geoffrey Valiente, Melissa Weiner, and Russell Zambrot.

High school students receiving the Presidential Academic Fitness Awards, which were established in 1983, must have attained a B+ average or equivalent, accumulated over

grades 9, 10, 11, and the first semester of grade 12. The B+ average is defined as equivalent to a 3.3 on a 4-point scale.

Students must also place at or above the 80th percentile on any nationally recognized standardized achievement test battery or any nationally standard-

dized college admissions exam, such as SAT. They must also have completed by graduation at least 12 high school or higher level course units in the "New Basics," which includes English, mathematics, science, social studies, foreign languages and computer science.

**Oceans of Europe Seafood Market**

**This Week's Special**  
Mussels - 3 lbs. \$1.00

**HOMemade:**

- Shrimp Salad ..... \$4.95
- Scungilli & Calamari Salad ..... \$6.95
- Fish Cakes ..... 60¢
- Coleslaw ..... 70¢
- Stuffed Clams ..... 6 \$3.50
- Eggs ..... a dozen 89¢
- Flounder ..... per pound \$4.29
- Fresh Sea Scallops ..... per pound \$6.99
- Fresh Bay Scallops ..... per pound \$3.99

**376 Main Street, Belleville**  
(Grand Union Shopping Mall)  
Closed Sundays **751-2446**

**New Jersey Health Spa For Women**  
256 Stuyvesant Ave., Lyndhurst • 935-3311

May Is Officially Physical Fitness Month

Let us help you take the first step to health and fitness.

OFFERING FOR A LIMITED TIME ONLY!

**2 FOR THE PRICE OF 1**

\*One day a month for just \$10.00 (minimum \$20.00 for 2 days).

**OFFER INCLUDES:**  
Our New Abdominal Crunch Machine (10 minutes to a flatter stomach)  
• Aerobic classes • Spillover classes every hour on the half hour • Individual exercises  
• Steam room • Sauna room • Inhalation room • Hydro-jet • Massage • Aquatics • Aerobics • Relaxation  
• Weight training • \$6.000 for 12, in 25 minutes • Private showers  
• Physical fitness • Aquatics • Exercise bikes • Large Dressing Room • Nutrition Snacks bar & vitamins

**PLUS FREE BABY SITTING SERVICE ON PREMISES**  
Personalized attention Monday - Friday 9-12 (Ages 2-6)

**ALSO AVAILABLE:**  
OUR NEW TANNING SALON  
GET RID OF THAT WINTER WHITE AND BE A BRONZE BEAUTY, \$9 for 10 Visits (PLUS 5 FREE VISITS)

Open Monday - Friday 9-9, Saturday 9-2. Must be 18 or older

**BOTTLE KING**  
THE KING OF LOW PRICES ON BEER AND WINE!!

3500 items discounted everyday! No tricks, No gimmicks, Just low prices!

**Always big discounts!** (sorry, no dealers)

**Bacardi Light Rum** \$13.49 (1.75 liter)

**Johnnie Walker Red** \$19.99 (1.75 liter)

**Michelob** \$10.99 (12 oz bottles)

**Budweiser** \$9.49 (12 oz cans)

**Schaefer Weekender** \$5.99 (24-12 oz cans)

**Old Milwaukee** \$5.99 (24-12 oz cans)

**Rheingold** \$5.99 (12 oz bottles)

**Cinzano Asti Spumante** \$6.99 (750 ml)

**Fotonari Soave** \$3.99 (1 1/2 liter)

**Coke** 99¢ (2 liter)

**Ice Cubes** 99¢ (10 lb bag)

**Brookdale Soda** \$2.99 (28 oz case plus dep)

**Taylor California Cellars Chablis** \$5.99 (1 liter)

**chateau Luzerne Burgundy** \$3.99 (1 liter)

**Cold beer at no extra charge!!**  
These prices only effective at Bottle King in Belleville

**BOTTLE KING DISCOUNT LIQUORS**  
325 Washington Ave., Belleville, NJ

PRICES EFFECTIVE THROUGH 5/14 • NOT RESPONSIBLE FOR TYPOGRAPHICAL ERRORS



# Belleville High School students named to honor roll

Joseph Ciccone, principal of Belleville High School, has announced the names of students achieving honor roll status for the third marking period.

Students who received high honor roll status for the third marking period are those who have obtained a grade point average (GPA) of 4.0 and above. They are as follows:

**Grade 9:** Kristina Bonacors, Ronald Caprigione, John Cerza, Donna Del Guercio, Katherine Eng, Kirsten Ernst, Eric Faragi, Karen Haug, August Leming, Sara Mellinger, Donna Pelaja and Christine Smith.

**Grade 10:** Dawson Bloom, Robert Cueva, Gail Davenport,

Denise Dorizas, Tracey Doyle, William Fabian, Jerry Ibelli, Joyce Luongo, Quynh Mai, Gregon Morriello, Vincent Orrei, Elizabeth Petrat, Leonardo Puentes, Ana Ramos, Robert Scheible, Tricia Seno, Hetal Shah, Clifford Williamson and Jennifer Zarra.

**Grade 11:** Dolores Bernal, Christoph Goldrick, Lori Herschell, Anthony La Vista, Clara Lupo, Frank Morrell, Eric Nazzola, Vincenza Priore, Joseph Rambaldi, Robyn Rotella, Daniel Senesky, Hina Taitor, Lori Tirrell, Veronica Valvano, and Trisha Wallace.

**Grade 12:** Susan Aschauer, Christine DeAngelis, Michael

DiChiara, Maria Garcia, Claudia Hartmann, Dana Italiano, Colleen Kelleher, Claudia Lara, David Machacha, Antimima Mariani, Laura Messio, Kate Menninger, Lisa Parrillo, Linda Pissot, Steven Platt, Vincent Pucci, Sharon Russo and Geoffrey Valente.

Students who have received honor roll status for the third marking period are those who have obtained a grade point average of 3.0 to 3.9. They are as follows:

**Grade 9:** Edgar Aguirre, Margaret Akian, Benedetto Armenti, Lisa Buttitta, Ronald Byers, Maria Catenacci, Romolo Cifelli, Michele Clarizio, Timothy Cook, Jerry D'Alessio, Vito D'Alessio, Vittorio D'Andrea, Dennis Davitt, Beth Demgard, Dipati Desai, George Dorizas, Simon Edwards, Paolo Gabriel, Lisa Gencarelli, Keian Guina, Gina Goergen, Christina Gueno, Jacquelin Herrera, Raymond Herschell, John Hromoko, Steven Iannuzzi, Pamela Janke, Darlene Juliano, Gina Krupka, Ken Kulbarg, Maude Lo Cascio and George Lukowiak.

**Also:** Carmine Mango, Danielle Marcantunio, John Marmaras, Stacy McCarthy, Michelle Naso, Duc Nguyen, Walter Nieczkowski,

Fredrick Omar, Frank Orrei, Teresa Paoli, Rupal Patel, Trupiben Patel, Carmen Paterno, Danielle Pizzi, Sandra Preiser, Michael Ramo, Denise Ravasche, Theresa Rebolli, Stephanie Robb, Anthony Rodriguez, Julio Rodriguez, Lisa Salvatori, Foster Schepis, Michael Senesky, James Serritella, Melanie Sherman, Angela Silvestri, John Stampone, Brian Villano, Jennifer Walker, Raymond Zamlot and Marilyn Zamora.

**Grade 10:** Laura Adesso, Angela Abruzzese, Jennifer Budd, Maria Camlato, Andrea Cammarato, Peter Carlo, Anne Carlucci, Kim Chan, Jerry Christoforato, Josephine Ciallella, Vincent Colaninno, Joanne De Ambrose, Joseph Dentie, Susan DiGiulio, Manuel Ferreira, John Fortunato, Rameida Gabriel, Carolyn Guilfrida, Paul Grande, Dina Guzzesi, Tamara Hager, Kelly Higgins, Christopher Kasper, Joseph Krulewicz, Naiven Lao, Mario Lemongello, Gustavo Lino, Tara Lindgren, Lehard Linaite and Michele Lvach.

**Also:** Jeannine Malanga, Nicole Mariani, Jennifer May, Michelle McAloon, Dawn Miller, Tina Miller, Eric Monahan, Dean

Nicholls, Edward Oldak, Gerald Padula, Victor Padwelka, Leonard Palumbo, Jean Perrone, Mgrna Ramos, Roger Real, Jennifer Robb, Fran Rotella, Jerry Russo, Peter Russo, Nicholas Sibilla, Raymond Sobanko, Jeffrey Spilbury, Romina Terranova, Michael Thompson, Kimberly Trefrey, Denise Williams and Antonia Zangari.

**Grade 11:** Heri Akian, Lisa Alfonso, Lisa Apruzzese, Anne Aquino, Richard Bejarano, Rita Belen, Alexander Best, Theresa Bonfante, Vito Caprio Jr., Lisa Carola, Laura Caruso, My Lien Chu, Connie Conklin, Rose Conway, Gerard Corbo, Stacey Corris and Lisa Curran.

**Also:** Christine Da Cunha, Heather Dalton, Donnapale Dandelin, Michele DelVergina, Scott Deleo, Rosalie Di Dio, Phil Di Giulio, Dennis Di Pasquale, David Di Stefano, Karan Dunn, John Enosque, Joseph Ferri, Nicola Amalia, Faguetas, Lori Filipek, Susan Friend, Tracy Galasso, Brian Goergen, Kelly Greco, Scott Grady, Lidia Grisolia, Lorraine Hesse, and Mark Huanjan.

**Also:** Michael Kane, Louis La John, Lenczek, Danielle Lyman, Susan Marcavage, Irene Maras, Marci, Matthew, Susan McTeague, Christine Melillo, Susan Miska, Helen Molina, John Morrell, Jon Nardachone, Timothy Nigler, Eric Norman, Monique Omar, Sandra Ombal, Frank Pizzella, Catherine Popovich, Tracy Puleo, Lisa Ravasche, Janet Reimay, Lenox Rice, Hawry Roman, James Roskiewicz, and Lorene Ruvillo.

**Also:** Gelford, Salvatore, Christian Salvatore, Dawn Schultz, John Stampone, Denise Strimolo, Carolyn Townsend, Tessa Tiana,

tola, Chau Tran, Vincent Trupia, Sandra Valencia, Donna Weedo, Sandra Zecca, Renee Zollo and John Zurlo.

**Grade 12:** Robert Abramson, Libera Armenti, Ivelth Arroyo, John Aunemma, Phyllis Bindi, Regina Bliss, Debra Boger, Dane Bonigami, Monique Bowie, Timothy Buckley, Maria Camillas, Michael Caputo, Tina Caputo, Shannon Cerza, Kim Chan, Lenore Chieffo, Toni Conforti, Caroline Congiari, Barbara Coppola, Emilio Cardova, Dennis Cotter, Dally Dalton, Denis DeBenedetto, Brian DeFuria, Felicia DeDuca, Tracy Delaney, Joseph DiVincenzo and Sharon Dingle.

**Also:** Hany El Helw, Maria Esposito, John Fabrizio, Lisa Galtieri, Denise Lazzari, Dominic Ferry, Christopher Felch, Grazia Di Giulio, Silvana Gencarelli, Maria Grutiera, Tran Hoang, Tran Hoang, Viet Hoang, Erich Hochstetl, Nicole Infanzotto, Daniel Jackson, Mike Jeffers, Desiree Johansen, Timothy Kane, Diane LaRossa, Vito Lacerenza, Christine Lehmann and Patricia Librelli.

**Also:** Aileen MacDonald, Gail Malangone, Mayling Malave, Gabriel, Dominick Mastro, John Messana, Tracey Nanni, Tina Narasoo, Chris Nardone, James Oberauer, Lisa Pascerina, Debra Pherne, James Petrat, Steven Puccio, Gita Piro, Josephine Phoenix and Adriana Puentes.

**Also:** Karen Richthel, Geraldyn Rogers, Yvonne Rosa, Ralph Rosenthal, Cathy Ross, Maria Sosa, Sheryl Sorrentino, Ricky Stanzione, Michele Suchman, Sabrina Taylor, Alexander Tobia, Raymond Torrella, Marc Walden, Melissa Wesner, Russell Zamlot, Marianne Zecca and Gail Zucker.

## Officers are elected to Boy Scout group

The newly-formed District 2 of the Essex County, Boy Scouts of America, which serves Belleville, Bloomfield and Nutley, recently elected its officers.

They are: Kevin Slattery of Belleville, district chairman, Mary Ann Rosamilia of Belleville, district vice chairman, Robert Holland and Richard Denton of Bloomfield, district vice chairmen, and Richard,

Conklin of Bloomfield, district commissioner.

The officers were installed by Dr. Kenneth King of East Orange, Essex Council BSA Vice President for Operations.

The nominating committee consists of Dick Drake, Tom Balsamo and Tony Lusnia of Belleville, Bob Holland of Bloomfield and Harry Ford of Nutley.

## Cub Scout Pack 310 competes in derby

Cub Scout Pack 310 of School 10 recently held their Pinewood Derby.

The winners were: Billy Addis, first place; Anthony Fetch, second place; Matthew Kastner, third place; and Ernie Zoppi, fourth place.

Addis and Fetch finished second and fourth, respectively, in the district derby against other

township troops.

Earlier in the year, all cub scouts and webelos received awards at the troops annual Blue and Gold Dinner.

Appearing at the dinner was a Mark Hogan look-alike who talked to the Cub Scouts about staying in school, respecting their parents and not talking to strangers.



Floating on Air - Stephen Mazziotta of Belleville found this balloon while visiting his grandparents' Nutley home. The balloon, originated from Visitation BVM School in Trooper, Pa., located 90 miles southwest. — Photo by Kara Laciynski.

## Girl Scout Leader of Distinction award presented to Jill Casale

Jill Casale of Belleville recently received the Girl Scout Leader of Distinction Award from the Girl Scout Council of Greater Essex County at a tea hosted by Council President Betty Olmstead.

Mrs. Casale was nominated and chosen for the award by adult Girl Scout volunteers in Belleville.

The purpose of the Leader of Distinction Award is to recognize a Girl Scout troop leader, co-leader or assistant leader's dedication, reliability and responsibility to the Girl Scouts in her troop and those in her community.

To receive this award the recipient must have developed

well-rounded Girl Scout programs, displayed enjoyment and enthusiasm in working with girls, maintained consistent troop enrollment, participated in inter-troop activities and served in a leadership capacity for three or more years.

### THE DRUG FAIR

248 Kearny Avenue, Kearny  
998-8787 • 997-8787

**GIFT CENTER**

• GLASSWARE • COSTUME JEWELRY • WATCHES  
• COSMETICS • ELECTRICAL APPLIANCES • AND  
MANY OTHER ITEMS

— ONE STOP FOR ALL YOUR NEEDS —

## Russell Stover CANDIES

Show Mom  
you love  
her in a way  
she'll remember.

This Mother's Day, give her a memory she'll always treasure — a hug and a musical greeting card from Hallmark. Every time she opens your card, she will hear a special song. Choose from several favorite melodies.

Hallmark Musical Greeting Cards

HOME OF ALL FAMOUS BRANDS OF COLOGNES & PERFUMES IN STOCK

• OPIUM COLOGNES • CHLOE • HALSTON NIGHT  
• LAGERFELD • IVORE • ISADORA •  
• NORELL • BAL A VERSAILLES • JOY  
• ALL LANCOME COLOGNES • CHANEL • GUERLAIN  
ALL OTHER COLOGNES & PERFUMES IN STOCK

Umberto's  
Corner

## Happy Mothers Day

UMBERTO OF NAPLES

Hair Cutting & Collure

567 Washington Ave.  
Belleville, N.J.

FREE PARKING  
On Premises

759-4900

OPEN SUNDAYS

547 Bloomfield Avenue  
Bloomfield, New Jersey 07003  
748-2000

## BLOOMFIELD CHAMBER of COMMERCE

"Business After Hours"  
Tuesday, May 20th, 1986  
4:30 - 7:30 p.m.

THE WHITE EAGLE MANOR  
41 Broughton Avenue  
Bloomfield, New Jersey 07003

- EXCHANGE BUSINESS CARDS  
(Bring a large supply with you)
- DEVELOP NEW BUSINESS CONTACTS
- EXHIBIT YOUR MERCHANDISE
- VIEW NEW AND EXCITING DISPLAYS
- INTERACT WITH CHAMBER MEMBERS  
AND OTHER BUSINESS PEOPLE

- DOOR PRIZES
- ELEGANT HORS D'OEUVRES
- CASH BAR
- EXHIBIT SPACE WILL BE LIMITED
- EXHIBIT SPACE IS ONE TABLE 3'x5'  
OR EQUIVALENT AREA. RESERVE  
TWO IF YOU NEED MORE SPACE.

Cost: In Advance — \$8.00 for Membership; \$10.00 for Non-Members  
At the Door — \$10.00 for Members; \$12.00 for Non-Members

THE PUBLIC IS INVITED

FROM  
**HEAVEN TO 7**

Furniture, Clothing, Softgoods and Toys

20% OFF  
Juvenile  
STROLLERS  
20% OFF  
Fri. Sat. Sun. Mon.  
May 9-10-11-12  
ONLY WHILE THEY LAST !!

you deliver!  
we deliver!

299 Broad St. Bloomfield, N.J. 07003 (201) 743-2395  
Mon., Tues. and Sat. 10 to 6, Wed., Thurs., Fri. 10 to 9, Sunday 12 to 5



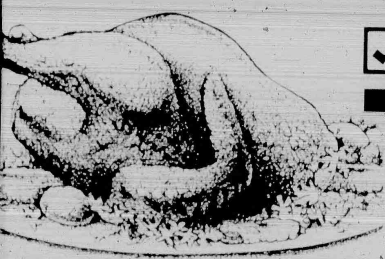


# Dollar Days

Most Stores  
**Open 24 Hours**  
7 days a week\*

\*Check your local store for exact hours.

\*Checkmark means a Warehouse Price Reduction.



☒ **Butterball**

**TURKEY 79¢**  
Frozen, Swift Premium  
7-14 lbs. avg. **lb.**

TV



**Valid thru May 10, 1986**

1000 ct. roll

**Scot-Tissue**

**3 \$1**

Limit one per family. Good at any Pathmark Supermarket thru Saturday May 10, 1986. Void where prohibited.

0031550

TV

0031550

**Valid thru May 10, 1986**

This coupon worth

**\$1**

towards the purchase of any 7-14 lbs. Swift Butterball Turkey

**Butterball Boneless Turkey Breast**

(In our Fresh Quality Meat Dept.)

Limit one per family. Good at any Pathmark Supermarket thru Saturday May 10, 1986. Void where prohibited.

0031560

**Valid thru May 10, 1986**

lb. loaf

**Taystee D'Italiano Bread**

(Baked goods available Mon. - Sat.)

**69¢**

with this coupon

Limit one per family. Good at any Pathmark Supermarket thru Saturday May 10, 1986. Void where prohibited.

0031930

TV

0031930

**Valid thru May 10, 1986**

(From our Baker's Oven Dept. - where avail.)

**Lunch Box Pies**

**6 \$1**

with this coupon

Limit one per family. Good at any Pathmark Supermarket thru Saturday May 10, 1986. Void where prohibited.

0031970

**New Country** (Dairy) 4 \$1  
Yogurt, Asst. Varieties 5 oz. cont.

**Mozzarella** (Dairy) \$2  
Sorrento Whole Milk or Part Skim 16 oz. pkg.

**Land O Lakes** (Dairy) \$2  
Butter, Light Salted or Sweet 1 lb. quarters

**Ricotta Cheese** (Dairy) \$3  
Whole Milk or Part Skim Milk or No Salt 3 lb. cont.

**Bacon** (Deli) 2 \$3  
Thorn Apple Valley 1 lb. loaf

**Hormel Pepperoni** 3 \$3  
Apply available in stores with Apply Shoppers Bulk, Store Wrapped or Vac Pack 1 lb.

**Croissants** 2 \$1  
Asst. Varieties 2 for

**Red Del. Apples** \$1  
3 lb. bag

**Potting Soil** \$1  
8 qt. Supermix ea.

**Peroxide** 2 \$1  
Pathmark Hydrogen 16 oz. bot.

**Raisin Squares** 2 \$2  
Kellogg's 1 lb. 5 oz. box

**Peanuts** 2 \$2  
Pathmark Dry Roasted Regular or Unsalted 1 lb. 8 oz. jar

**Cold Cups** \$1  
Pathmark 9 oz. or 7 oz. Plastic 80, 100 ct. pkg.

**Fab Detergent** \$5  
Liquid gal. bot.

**Pepsi** \$1  
or Diet Pepsi 2 ltr. bot.

**Mayonnaise** 2 \$3  
Hellmann's qt. jar

**Applesauce** \$1  
Pathmark Unsweetened, Natural or Regular 3 lb. jar

**Pathmark Rice** \$2  
10 lb. bag

**Beefaroni** 2 \$1  
Chef Boy-ar-dee, Beef Ravioli, Spaghetti & Meatballs, ABC's & 123's w/ Meatballs or Roller Coasters 10.4 oz. can

**Prince Dinner** 5 \$1  
Shell & Cheddar, Macaroni & Cheese or Twist & Cheddar 7 1/2 oz. box

**Cheese Pizza** 2 \$3  
(Frozen) Pathmark Two French Bread 10.4 oz. box

**Banquet Chicken** \$3  
(Frozen) Fried 2 lb. box

**Sandwich Steaks** 2 \$5  
(Frozen) Pathmark 2 lb. box

**Lemonade** 2 \$1  
(Frozen) Pathmark White 16 oz. can

**Fish Sticks** \$1  
Gorton's Crunchy, (Frozen) Fish Fillets or Fried Clams 5 oz. box

**Beefburgers** 2 \$3  
(Frozen) Pathmark 1 lb. 4 oz. bag

Prices effective Wed., May 7 thru Sat., May 10, 1986.

Some artwork shown is used for design purposes only and does not necessarily represent items on sale. So that we may serve all our customers, we reserve the right to limit sales to three packages of any item. Items offered for sale not available in case lots. Certain items not available where prohibited by law. Items and prices valid only at Pathmark Supermarkets. \*Some NY, Conn. and N.J. Pathmarks closed Sundays. Most stores not open Sunday close midnight. Saturday and open Sunday at midnight. Check your local Pathmark for exact Store Hours. During late hours some departments may be closed. Not responsible for typographical errors. Health Aids and General Merchandise available in Pathmark Supermarkets with Pharmacy Depts. and at Pathmark Free Standing Drug Stores.



# Events in the Area

## Flea market/craft show May 17

Belleville Music Parents Association is planning a flea market/craft show 10 a.m. to 5 p.m. May 17 at Belleville High School, 100 Passaic Ave. Spaces available. Call 751-6251 a.m. or 759-6795, 751-5757 p.m. Rain date: May 18.

## Kiwanis card party May 15

The Belleville Kiwanis will hold a card party 6:30 p.m. May 15 at Amvets Hall, Newark Ave. For tickets at \$6, call Frank Pitt at 763-1058.

## Indoor flea market May 17

St. Mary's School and Home Association will hold its spring indoor flea market and craft show 9:30 a.m. to 4 p.m. May 17 in the church hall on Msgr. Owens Place, Nutley. For table rental at \$15, call 235-1100 or 751-7733.

## Chamber's 'Business After Hours'

The Bloomfield Chamber of Commerce will sponsor its next 'Business After Hours' 4:30 to 7:30 p.m. May 20 at the White Eagle Manor, 41 Broughton Ave. Exhibits, cash bar, hors d'oeuvres, awards. Reservations required by May 9. For more information, call 748-2000.

## Organizations for area singles

The Singles Connection for area singles, widowed, divorced and separated, meets the first and third Thursday of each month, 8 to 11 p.m. at Grace Episcopal Church, 200 Highfield Lane, Nutley. Rap groups, music, dancing. Refreshments served. Donation, \$3. Call 235-1177 for more information.

New Jersey Moonrakers, a club catering exclusively to tall and single adults, meets 9 to 10 p.m. the second Tuesday of the month at the Meadowlands Hilton, 2 Harmon Plaza, Secaucus. All ages welcome. Height requirements: men, 6'2"; women, 5'10". Fee: \$3 per guest, members free. For more information, call Marjane at 968-2959 or write N.J. Moonrakers, P.O. Box 121, Paramus.

Jewish Singles sponsors a dance every Friday for singles in their 20's and 30's. For more information, call 797-6877.

A New Beginning sponsors a pub mixer at Allan's Place, 522 Franklin Ave., Nutley, the second and fourth Wednesday of each month after 9 p.m. Lite music, drink and conversation in a friendly pub-like atmosphere. For more information, call 861-3357 or 867-9898.

Sacred Heart Singles will meet 8 p.m. May 9 in Nardiello Hall, 12 State St., just off Liberty St., Bloomfield. "Line dancing" taught by Columbia and Nick. Refreshments. All singles invited.

Parents Without Partners, West Essex Chapter 1208, will hold a dance May 9 at Knights of Columbus, 299 Eisenhower Parkway, Exit 4a from Route 280, Livingston. Members: \$5 admission. Coffee and cake. Orientation session for prospective members begins at 8:30 p.m. For more information, call 226-7727.

## Luncheon, card party May 13

Grace Episcopal Churchwomen's annual luncheon and card party is scheduled 12:30 to 3:30 p.m. May 13 at the church, 200 Highfield Lane. Donation: \$5. For more information, call the church office at 235-1177.

## Upcoming class reunions listed

Belleville High School Class of 1936, James J. Tully, P.O. Box 783, Mantoloking, N.J. 08738 or Ruth Minker Thieme, 667-8241.

Belleville High School Class of 1978, November, 1986, Anthony Nicossia, 751-6474, Debbie Current, 751-8584, Kathy Gino, 429-7347 or Diane DeMayo, 736-2426.

Nutley High School Class of 1966 is planning a 20 year reunion. For more information, call Alan DeFabbio at 661-2110 or Russell Catanante at 661-2093.

Belleville High School, Class of 1946 is celebrating its 40th reunion Oct. 24 at Friar Tuck Inn, Route 23, Cedar Grove. Tickets: \$35 per person, \$70 per couple. Classmates, especially those who have had a change of address since the 25th reunion, should contact The Reunion Committee, Class of 1946, c/o Nino's Candy and Cards, 548 Union Ave., Belleville, 07109.

Belleville High School, Class of 1966 is planning a 20th reunion Nov. 29 at the Aspen, Passaic. For more information, contact P.O. Box 666, Belleville.

Nutley High School Class of 1956 is looking for classmates for a 30th reunion this November. Contact Rose LaDoretta Heim at 338-9614.

Nutley High School Class of 1941 will hold its 45th reunion Nov. 15 at Friar Tuck, Cedar Grove. If anyone has not been contacted or needs more information, write Lloyd Newsome, 65 Hawthorne Place, Montclair, 07042 or phone him at 783-9162. Tickets at \$50 per person include cocktail hour, dinner, music and a brochure containing up to date information about class members.

Passaic County Technical & Vocational High School Class of 1976 is planning a 10 year reunion June 27 at the Tides, North Haledon. Graduates who have not been contacted should call Judy Bakonyi at 956-7572.

East Side High School, Newark, Class of 1960 will hold a reunion June 8 at Holiday Inn, Newark. For more information, call Eleanor Mirandi at 344-7089.

Bloomfield High School Class of 1936 will hold its 50 year reunion June 20 at Friar Tuck Cedar Grove. Tickets: \$25 per person. For more information or reservations, call Anthony Costagno at 743-2018 or 743-4400 or Frank M. Leo at 748-5858.

## Tables available for flea market

St. Anthony's Rosary Society will hold a flea market 9 a.m. to 4 p.m. June 22 at St. Anthony's School, 25 North 7th St., Belleville. Rain date: June 29. Tables available at \$10. Call Helen at 748-5087 or Remy at 484-0845 after 5 p.m.

## Yantacaw mothers plan dinner

Yantacaw Mothers' Club is sponsoring its 31st annual dinner 6:30 p.m. May 13 at The Fiesta, Rt. 17, Wood-Ridge. "A Broadway Sampler" will be performed by the Yates Musical Theatre. For tickets at \$18 or more information, call Peggy at 661-2287 or Janet at 661-5182.

## Roche retirees announce trips

The Roche Retiree Club announces two trips May 21, 22, 23. Samoset Resort, Rockport, Me. Buses leave Roche parking lot 906 Kingsland St. at 6:20 a.m. and depart immediately after luggage is loaded, May 27. Plazil Brauhaus, Pomona, N.Y. Buses arrive at parking lot 906 9:15 a.m., depart 9:30 a.m., return 6:30 p.m.

## Glen Ridge Arts Festival May 10

The 8th Annual Glen Ridge Village Arts Festival will be held 10 a.m. to 4 p.m. May 10 in the shadow of 'The Station,' Ridgewood Ave. Rain date: May 17. Artists and craftsmen invited to participate. All media accepted. Registration fee: \$15. Professional judging with cash awards and gifts. Food and entertainment. Sponsored by The Mayor's Committee on Cultural Affairs. For more information, call 748-4550.

## Roche retirees meet May 10

The Roche Retiree Club will meet 1:30 p.m. May 10 in building 76 auditorium on the Roche complex. A video program, "Nutrition," narrated by Dr. Frank Field of CBS-TV will be shown.

## Cancer Awareness Week events

As part of The 4th Annual Cancer Awareness Week, a dance will be held 7:30 p.m. May 10 at Bethany Lutheran Church, 188 New St., Belleville. (Note new location.) Music by D.J. Ron Tickets: \$3. The 2:00 Flamethrowers of radio station WHI2-FM return to Clearman Field, off Union Ave. 4 p.m. May 18 to face the local Cancer Conquerors. Tickets: \$2 for adults, \$1 for children. Proceeds of both events will aid the cancer relief fund.

## Legion auxiliary meets May 12

Unit 70 American Legion Auxiliary will meet 8 p.m. May 12 at 45 Franklin Ave., Nutley.

## Kingsland Manor flea market

The Kingsland Trust's annual outdoor Flea Market and Crafts will be held on the grounds of Kingsland Manor, 3 Kingsland St., 10 a.m. to 5 p.m. June 7. Dealer set up: 8:30 a.m. Rain date: June 8. Reserved space for 6-foot table: \$15. Dealerships: 15 Enclosures. Space reservations to Douglas Eisenfelder, 15 Enclosure, Nutley, 07110. For general information, call 667-4134 or 667-2745 after 6 p.m. Hot dogs, donuts, coffee, soda available.

## Orechio Association picnic June 8

The Carmen A. Orechio Civic Association will hold its annual picnic 1 to 6 p.m. June 8 at the ITT picnic grounds, Nutley. Food, entertainment, sports events. For tickets at \$10 for adults and \$5 for children under 12, call Ray Picciatello at 667-7931.

## MIDS meets May 21 in Nutley

The Essex County Chapter of MIDS will meet 8 p.m. May 21 at 15 Clover St., Nutley. MIDS is a self-help support group which offers friendship and understanding to parents who have suffered a loss due to miscarriage, infant death or stillbirth. For more information, call Lisa Calabria at 235-1364 or Bonnie Smith at 239-8467.

## Great American Circus May 19

The Kingsland Trust presents The Great American Circus 4:30 and 7:30 p.m. May 19 at Msgr. Owen's Field, Park Ave., Nutley. The elephants will raise the tent at approximately 7 a.m. Tickets may be purchased at the Parks and Recreation Dept., 44 Park Ave. or from Trust members. Tickets purchased before noon the day of the show: \$4 for adults which includes two tickets for children under 12. Purchased after noon or at show time: \$6 for adults including two children's tickets. Children under 12 must be accompanied by an adult.

## Hands Across America May 25

Hands Across America, a national fundraising event will be held May 25. To make a pledge and join the line, call 877-9750, Dorothy C. Cruz at 751-6312, Claire Welch at 429-8913 or 456-4321 or toll free 1-800-USA-9000.

## Post, auxiliary to install statues

Post members and ladies auxiliary to Stuart E. Edgar Post 493, Veterans of Foreign Wars, will install new officers 7 p.m. May 9 at the post home, 271 Washington Ave., Nutley.

## 'Music Man' opening May 9

The Roche Players will present their 15th annual production, "The Music Man," 8 p.m. May 9, 10, 15, 16 and 17 at the Hillside School, 54 Orange Road, Montclair. Admission is \$5 with proceeds benefiting the community mental health services of Belleville, Bloomfield, Nutley and Clifton. Tickets may be purchased at the door or in advance by calling 235-2217 or 235-5400.

## Spring Festival at St. Valentine's

St. Valentine's Church, 125 N. Spring St., Bloomfield, will hold its Spring Festival 6 to 11 p.m. May 30, 1 to 10 p.m. May 31 and 1 to 9 p.m. June 1. Food, fun, games for the whole family.

## Outdoor antiques, crafts, fleas

A giant outdoor antiques, arts and crafts and flea market will take place 10 a.m. to 5 p.m. May 18 at Msgr. Owens Memorial Park, Park Ave., Nutley to benefit the Nutley Family Services Bureau building fund drive.

## Post, auxiliary to install statues

Stuart E. Edgar Post 493, Veterans of Foreign Wars and its ladies auxiliary will install new officers 7 p.m. May 9 at the post home, 271 Washington Ave., Nutley.

## Memorial Day cake sale at Elks

The ladies auxiliary to Nutley Elks Lodge, 242 Chestnut St., will hold its annual Memorial Day cake sale beginning at 9 a.m. May 26. Also available: hot dogs, sausage, cold drinks, coffee, tea.

## Flea market June 7 in Bloomfield

The Episcopal Church Women of Church of the Advent, 498 Watchung Ave., Bloomfield, will hold their annual flea market in the church yard 10 a.m. to 4 p.m. June 7. Rain or shine.

## Columbiettes' hoe-down May 17

The Bloomfield Columbiettes' third annual Hoe-Down will be held 7:30 p.m. May 17 at Bloomfield Knights of Columbus Council, 190 State St. Donation: \$15 per person. Music by the BEAMS. Food by Esposito, beer and soda. For tickets, call Mary Huck at 743-8461.

## Bloomfield Symphony concert

The Bloomfield Symphony Orchestra will present the farewell concert of tenor Mario Cristaldi 8 p.m. May 16 at North Junior High School, Huxford Road, off Broad St. Operatic arias and popular Italian songs. Free.

## Religious classes at St. Mary's

Registration for religious classes for the 1986-87 school term for public school students in grades 1-8 will be held May 12 through June 13 in St. Mary's Church, St. Mary's Place, Nutley. Classes are held 9 a.m. Sundays September through May. For more information or to register, call 667-9239 9 a.m. to 1 p.m. Monday through Friday.

## 'A Kempis meets May 13 at Mayfair

The A Kempis of New Jersey, an affiliate of the National Council of Catholic Women, will hold its annual meeting noon May 13 at Mayfair, West Orange. Reservations through Carolyn Hahn of Bloomfield.

## Second balloon launch May 25

The Nutley Junior Woman's Club will sponsor its second annual balloon launch May 25 at Turtle Back Zoo, West Orange, with proceeds to a search fund to locate missing children. Sponsor of the balloon traveling the farthest will receive a \$100 savings bond. To help with the launch or sponsor a balloon, call the Nutley Juniors at 667-7956.

## Come to the Cabaret May 10

The Park United Methodist Church Chancel Choir invites you to 'Come to the Cabaret' 7 p.m. May 10 at the church, Park and Broad streets, Bloomfield. Fun, music, surprises, home-made desserts and beverage. For tickets at \$3.50, call the church office at 429-7745 or purchase at the door.

## Watessing seniors' flea market

The Watessing Park Seniors Wednesday Club will hold a flea market and cake sale 9 a.m. to 4 p.m. May 10 on the Green in Bloomfield.

## 'Moby Dick' screened May 10

The 1930 version of Herman Melville's 'Moby Dick,' starring John Barrymore and Joan Bennett, will be screened 8 p.m. May 10 at the Essex Film Club, 263 Harrison St., Nutley. Also on the program: a film made by Barrymore while on a vacation with his pet monkey, Clementine, and the 1921 comedy, 'Never Weaken' with Harold Lloyd. All film fans welcome. Non-members asked for a small donation to the film preservation fund.

## Outdoor flea market May 26

Holy Family's Home and School Association will sponsor an outdoor flea market 10 a.m. to 4 p.m. May 26 at Holy Family parking lot, Harrison St. and Brookline Ave., Nutley. Table rental is \$12. For rental space or information, call 667-2991. Free admission and parking. Refreshments available.

## Chinese auction at Ahavath Achim

Congregation Ahavath Achim, 125 Academy St., Belleville, will hold a Chinese auction 7:30 p.m. May 14. Admission: \$2.50. Tickets available at Atlantic Uniform, 444 Washington Ave. or Michaels Men and Boys Wear, 138 Washington Ave.

## Recovery Inc. meets Wednesday

Recovery Inc., a community mental health self-help group for nervous persons, meets 7:30 p.m. every Wednesday at the Parks Department, 44 Park Ave., Nutley. The meeting is free and open to the public. 766-7466.

## Toughlove meets Thursdays

Toughlove, a support group for parents who have problems with their teenagers' behavior, meets 7:30 p.m. every Thursday at the Parks and Recreation building, 44 Park Ave., Nutley. For information, call 743-5511.

(To be included in this column, releases must reach us by the Friday preceding publication. Coverage will be limited to events in the Belleville, Bloomfield and Nutley area primarily. Out of the area events will be covered only if space permits. Send releases to Events in the Area, 800 Bloomfield Ave., Nutley, N.J. 07110.)

751-5500

## La Scala Restaurant & Cocktail Lounge

Now Accepting Reservations  
For Mother's Day

Live entertainment Wed. thru Sun.  
Dancing until 2 a.m.

Open for Lunch & Dinner 369 Washington Ave. Belleville

## GO FLY A KITE

Headquarters For  
Designer Kites and Windsocks

TOY in the ATTIC

40 church street montclair, nj 07042  
(201) 746-2994



\* All major credit cards accepted on telephone orders



# 2nd Big Week at Grand Union... Managers' Sale!



Our Managers know the foods you like best, and this week they've put together a

super Managers' Sale on many of your favorites... It's a great time to stock up!

They've selected hundreds of terrific Red Dot Specials this week... here are some of them. Look for the rest in the Price Finder for Specials.

U.S.D.A. Choice - Boneless Beef  
**Bottom Round Roast**  
Sold As Roast Only.  
Lb. **139**

Prints - Paper  
**Mardi Gras Towels**  
2 <sup>110</sup>/<sub>Sheet</sub> <sup>100</sup>/<sub>Rolls</sub>

**Super GRAND UNION Coupon**  
(667) Chilled  
**Sunkist Orange Juice**  
One 2-Liter Btl. **99¢**  
No Minimum Purchase Required With This Coupon - Good May 4 thru May 10 - One Coupon Per Customer

U.S.D.A. Grade 'A' Fresh  
**Perdue Whole Chickens**  
<sup>2 1/2</sup>/<sub>3 Lbs.</sub>  
Lb. **59¢**

Chunky Garden Style - Traditional or Homestyle  
**Ragu Spaghetti Sauce**  
2-Lb. Jar **139**

**Super GRAND UNION Coupon**  
(666) Colors or White  
**Scottissue Bath Tissue**  
3 <sup>1,000</sup>/<sub>Sheet</sub> <sup>100</sup>/<sub>Rolls</sub>

Chocolate Creme or Double Stuf  
**Nabisco Oreo Cookies**  
20-oz. Pkg. **189**

California - Luscious  
**Sweet Strawberries**  
1-Qt. Bskt. **139**

**Super GRAND UNION Coupon**  
(665) Fancy Solid Pack - In Oil or Water  
**Star-Kist White Tuna**  
One 6.5-oz. Can **69¢**  
No Minimum Purchase Required With This Coupon - Good May 4 thru May 10 - One Coupon Per Customer

## THE BUTCHER BLOCK

U.S.D.A. Choice Beef Round  
**Boneless Rump Roast**  
Lb. **169**

Plume de Veau - Fresh  
**Veal Breast for Stuffing**  
Lb. **99¢**

U.S. No. 1  
**All Purpose White Potatoes**  
10-Lb. Bag **79¢**

Orange, Ginger Ale or Cream or Regular, Diet or Caffeine Free  
**C&C Cola**  
2 <sup>2-liter</sup>/<sub>Btts</sub> **100**

Regular or Ripple  
**Grand Union Potato Chips**  
7-oz. Pkg **79¢**

**Bottom Round** **199**  
U.S.D.A. Choice - Boneless Beef  
**Eye Round Steak** **239**  
U.S.D.A. Choice - Boneless Beef  
**Cut up Chicken** **69¢**  
Perdue - U.S.D.A. Grade-A - Fresh - Guaranteed  
**Pork Tenderloin** **299**  
Fresh Boneless  
**Beef Liver** **49¢**  
Sliced - Frozen

**Chick 'n Nuggets** **249**  
Perdue - Chicken - Cooked  
**Chick 'n Cutlets** **299**  
Perdue - Chicken - Cooked  
**Chick 'n Roasters** **199**  
Perdue - Chicken - Cooked  
**WHOLESALE SAVINGS**  
**Smoked Ham** **119**  
Smithfield - Whole Super Star Turkey

**Emperor Grapes** **99¢**  
Red - Sweet - Late Season  
**Crisp Carrots** **149**  
Fresh Tender  
**Juice Oranges** **169**  
Fresh - Late Season  
**Chicory** **59¢**  
On Fresh Tender Escarole  
**Apples** **89¢**  
Granny Smith  
Choice No. 1 - 2 1/2" Min.

**Kellogg's** **135**  
Breakfast Cereal  
**Tide Liquid** **519**  
Laundry Detergent  
**Napkins Mardi Gras** **119**  
Prints  
**Tomato Ketchup** **99¢**  
Grand Union - Squeeze Bottle  
**Shasta Soda** **5 100**  
Diet - All Flavors

**Hawaiian Punch** **69¢**  
3-Pack - Assorted Flavors - Three 8.45 oz. Cans  
**S.O.S. Soap Pads** **99¢**  
For Sopping  
**Mi-Lem** **99¢**  
Pineapple  
**Cranapple Drink** **149**  
Dietary Spray or CranGrapple  
**Broth** **2 79¢**  
Chicken or Beef  
College Inn

**THE CORNER DELI**  
IN 15 MINUTES WITH SERVICE DELI  
**Sliced Pastrami** **159**  
King's Pride - or By The Piece  
**Swiss Cheese** **189**  
Great Lakes - No Salt Added  
**Celebrity Ham** **169**  
Hawaiian - Imported - Cured - Ready to Eat

**Waffles** **69¢**  
Assorted - Frozen  
**Jell-O Pops** **199**  
Garden of Eatin' - Berry  
**Italian Ice** **139**  
Costa - Assorted Flavors

**Schrafft's Ice Cream** **159**  
Assorted Flavors  
**Celeste Pizza** **99¢**  
Cheese - 16.5 oz. or Supreme  
**Chicken Nuggets** **299**  
Banquet - Hot Bites

**DATE-LINE DAIRY**  
**Sour Cream** **99¢**  
Santalitas  
**Cottage Cheese** **89¢**  
Assorted - Assorted Varieties  
**La Yogurt** **2 79¢**  
Assorted Flavors

**HEALTH & BEAUTY**  
**Aqua-fresh Toothpaste** **129**  
With Fluoride & Brighteners  
**Alka-Seltzer Tablets** **149**  
Blue Original  
**Signal Mouthwash** **299**  
Antiseptic

**NATURAL BEEF!**  
It's now available at Grand Union. And it's USDA Choice. Look for the Natural Beef Label. It tells the story.

**GRAND UNION Coupon**  
(678) **20¢ Off**  
With This Coupon And Purchase Of One Pkg. of 25 - Facial  
**Kleenex Softique Tissue**  
Coupon Good May 4 thru May 10  
Limit One Coupon Per Customer

**GRAND UNION Coupon**  
(676) **25¢ Off**  
With This Coupon And Purchase Of One Half Gal. Btl. - Natural  
**Speas Farm Apple Juice**  
Coupon Good May 4 thru May 10  
Limit One Coupon Per Customer

**GRAND UNION Coupon**  
(669) **Buy One Get One FREE**  
With This Coupon And Purchase Of 1-lb. Package  
**Betty Crocker Pound Cake**  
When you purchase one 1-lb. pkg. Betty Crocker Pound Cake at our regular low price  
1 Coupon Good May 4 thru May 10  
Limit One Coupon Per Customer

TOLL-FREE  
STORE INFORMATION  
1-800-221-1835

# GRAND UNION

**HELP LADY LIBERTY!**  
Contribute one or more of your aluminum cans and their value will help Grand Union support the Restoration of The Statue of Liberty and Ellis Island.

Prices effective Sunday, May 4 thru Saturday, May 10 at all Grand Union stores in New Jersey, Rockland and Orange Counties. In order to assure a sufficient quantity of sales items for all our customers, we reserve the right to limit sales to 3 packages of any item unless otherwise noted. Not responsible for typographical errors. For store information call toll free, 1-800-221-1835.



# Belleville Times SPORTS

## Buc Shots

By Michael Lamberti

## Rivalry forms between girls' softball teams



Belleville and Livingston, two veterans of past softball wars, will go back to the trenches this weekend in the semi final round of the Essex County tournament. When you think back to previous battles between these two in county play, then you know that nothing comes easy.

It's becoming a very big game," head coach Carl Corino said. Livingston and Belleville has been a big rivalry for quite some time. Look back to the big baseball games between the two in the late '70s and early '80s. Those games always seemed to go down to the wire. Tony Hope, the Lady Lancers' coach, has done a tremendous job over there. He used to coach the boys' baseball team and now he's coaching the girls very well. I have a lot of respect for Livingston and their program. They do the right things in the big games. You can never count them out.

Certainly, Corino's memory is quite clear on the last time the two played in county action. It was last May in the championship game of the tourney. Belleville came into the game the solid favorite with Livingston playing the Cinderella team. The Lancers were not seeded in the top five, but clawed its way to the top, upsetting top seeded Caldwell in the semis.

In the finals, Livingston charged ahead early, then held its breath as Belleville made a late charge before winning, 4-3. This year, it's been the same story for Livingston. Not expected to go far, the Lancers were under 500 when it played undefeated and state-ranked Cedar Grove in the quarter finals last Saturday.

What happened should be of little surprise to softball fans in this area. The Lancers got strong pitching and good defense and upended Cedar Grove, 4-1. So, when Corino says he is not looking ahead, you can see why. Livingston is a team that gets up for the big games and this Saturday will be a big game at Pulaski Park, Bloomfield.

However, let's look at this years Belleville team. Once again, Corino has a solid entry. Despite losing valuable seniors, Corino has knack for putting a solid team on the field year in and year out. He took the reins in 1980 and his records have been 20-8, 18-8, 24-22, 23-4, 24-5 and 24-6. This season, the girls are 15-3. They've won eight straight games and are getting excellent pitching from Jeanine Luzzi and Michele Calderone. The offensive punch has been coming from Cindy Ruggiero, Laura Caruso, Desiree Johansen, Sherri Sorrentino and Maryanne McArthur.

Excellent defense has been coming from Laurie Donarski, Johansen, Trish Tramulotta, Caruso, Raquel Nelson, Huggiero, Danielle Walker and Sorrentino.

It's been a team effort in the true sense of the word. Anything less, and the girls would be no where close to the 15-3 record it took into this weeks action.

Nothing comes easy for us," Corino said. "That's what I like about this team. They just hang in there and keep plugging."

The Essex County tournament has been Belleville's biggest claim over the past seven years. With its victory over Bloomfield last Saturday, Belleville assured itself of a semi final bid for the sixth time over the past seven years. Over that period, Belleville has posted a 17-4 mark in county play.

The girls have not lost a semi final game. Three of the four losses have come in the finals. The team lost to Cedar Grove in 1980 and '84 and bowed to Livingston last season. In between, the team won the crown in '82 and '83, beating Livingston and Bloomfield. Only in 1981 did Belleville not advance to the finals, losing in the quarter final round.

The counties are always a big goal for us," Corino said. "I'm proud of the fact that we've been so successful there. It's always nice to go to Pulaski Park and play in the double header, in the semi finals."

It's easy to see why Corino finds it enjoyable to play at Pulaski. Back in 1980, the girls were a surprise entry in the semis and battled Columbia for the chance to play powerful Cedar Grove in the finals.

In the seventh inning, Belleville trailed, 3-0, but tallied four times to pull away with a stunning victory. The girls lost to Laurel Van Der May and Cedar Grove in the finals, 4-0, but the team had made a big accomplishment by gaining the finals.

Two years later, it was Belleville's turn to be the force and the girls breezed by Verona, 8-3 in the semis and Livingston, 8-0 in the finals. The game with Livingston had special meaning because four days earlier, the Lancers had eliminated Belleville from the state tourney in early innings.

In '83, Belleville beat top seeded Cedar Grove, 9-0 in the semis and ousted Bloomfield in the finals, 3-1. It should be noted that Dina De Aquino and Tracy Buono were the batteries for the two '83 championship teams, playing every inning of the semis and finals.

The championship string ended in '84 when Cedar Grove defeated Belleville, 8-5. The girls had defeated top ranked Caldwell in the semis.

Last season, Belleville defeated Bloomfield, 17-14 in a wild semi, then fell short to Livingston.

It's easy to see that the Essex County tourney has produced some exciting memories for Belleville softball fans. It certainly looks like the '86 tourney will continue that trend. Good luck to coach Corino and his young team against Livingston this Saturday night.

### Athlete of the Week

It's a tie between Laura Caruso and Jeanine Luzzi. Caruso did the job at the plate with key hits and Luzzi hurled back to back shutouts against Nutley and Bloomfield.

### Last Week's Quiz

The only World Series sweeps over the past 20 years occurred in 1966 and '76. The Orioles swept the Dodgers in '66 and the Reds blanked the Yankees in '76. The Dodgers' manager in '66 was Walter Alton and the Orioles' Hank Bauer. In '76, Sparky Anderson managed the Reds and Billy Martin, the Yankees.

### For This Week

Have the Minnesota Twins ever been to the World Series? If so, how did they do?

## Bucs tie Mounties, 8-8



Small Talk: Belleville High School baseball head coach Ralph LaConte talks with pitcher Jay Marchese (18) during a game against Montclair as catcher Joe DeMonroe (2) looks on. Photo by Michelle Jeannotte.

## Six boats earn spots in City crew finals

The Belleville crew team had another impressive week competing in the City Championships at Philadelphia last weekend.

The Bucs will take part in the Poughkeepsie Regatta this weekend, marking a sad departure from the famed Goodwill Regatta. Coach Sam Guiffreda announced last Monday that the Regatta has been nixed for this season because Nutley High will not be competing.

It's very disappointing," the coach said. "I've been coaching crew for 22 years at Belleville High and we've always faced Nutley. I'm hoping they will have their program back in gear next season. It's always been a big rivalry."

When Guiffreda took the oars as coach in 1965, the Goodwill Regatta was a two team race between Nutley and Belleville. It wasn't until 1969 that Kearny became a member of the boat house and formed the familiar threesome that has produced the Goodwill. This season, both Belleville and Kearny will take part in the prestigious Poughkeepsie Regatta.

It's also disappointing because we don't have that many races at home," Guiffreda said.

## Collucci's team drops two close decisions

Despite playing well, the Belleville golf team dropped two close decisions last week in conference play. The 5 shafts lowered the team record to 7-6.

Rocco Collucci's team played host to Kennedy last Tuesday and will be in Montclair this afternoon. Next Monday, the Bucs host Caldwell, at Forest Hills County Club and next Wednesday, are host to Nutley at Branch Brook Park. Both of those matches begin at 1 p.m.

The Bucs lost to Passaic, 202-208, ending their 19 game winning streak and dropped a heart breaker to Clifton, 183-184. Collucci was happy with the match against Clifton, despite the loss.

"Clifton is considered one of the better teams in the conference," he said, "so it was a good effort on our part. Everyone shot well for us. If we keep playing like that, we're going to win some more."

Against Passaic, Belleville was without the services of Mike Dasaro, a key player who was sick and could not play.

A healthy Dasaro might have

made a difference in the final score, at that's hearsay.

Against Clifton, Brian De Furia led the way with a 40 over nine holes. Dasaro was back in the lineup and fired a 38. Tim Nielsen had a 47 and Joe DeGiglio 50.

In the county tournament, held on April 28, Belleville was less than impressive, finishing 14th. Strong performances were turned in by Nielsen, who had a 94 over 18 holes and Dasaro, who hit for a 96.

As for the du 1 matches, Collucci found some humor in the tight scores.

"This must be my year for close scores," he said, referring to the golf and basketball season where Belleville played in a lot of close games. "You can't say we're not an exciting team."

The Bucs will hope to regroup in NJJIL action this week. Collucci expects a tough match with Montclair and Nutley. Caldwell, a non conference match, should provide a strong team, as well.

## Daylight savings time gives team the edge

By Michael Lamberti

There is a saying that goes "It's always darkest before the dawn." For the Belleville baseball team, that dark moment occurred in the fourth inning of a game with Montclair last Monday afternoon. No, it wasn't a total eclipse, but what followed would turn the tide for the once struggling team and put Belleville back on track.

Belleville, winners of four straight games, took an 8-5-2 record into a busy week. The Bucs battled Kennedy, Essex Catholic and Clifton in earlier contests. The Essex Catholic game was a preliminary contest in the Greater Newark Tournament. If Belleville won that game, it will face the winner of West Essex-West Side at Belleville on Saturday, starting at 11 a.m. Tomorrow, afternoons, the Bucs are at Bloomfield in a make up game at 4 p.m. and next Tuesday will host the same Bengals at 4 p.m.

The game with Montclair could prove to be the turning point of the 1986 season. Belleville was playing host to a winless team and trailed, 8-1, after 3 1/2 innings. Head coach Ralph LaConte admitted it didn't look too good at the time.

It wasn't going well," the coach said, "however, I know the capabilities of this team when we get a full game in. We can score runs."

## Girls' softball team thrives on pressure

Some time in mid July, Carl Corino will think back to the 1986 Belleville softball team and his heart will begin to take extra beats. He will remember that his team was not for the weak willed. It's a team that seems to thrive on pressure and doesn't want to take the easy way out.

The week of April 28-May 3 will rank as one of the most exciting in team history. The girls won five games, all of which were pressure packed. In the end, the team stretched its winning streak to seven games, boosted its team record to 15-3 and will now set its sights on another "key" week.

The girls were host to Kennedy last Monday. Yesterday, it played host to Clifton and tomorrow afternoon, will host Bloomfield, at 4 p.m. On Saturday evening, Corino's team makes it fifth straight trip to the "Final Four" of Essex County softball, playing Livingston in the county semis at 6 p.m. The game will be played at Pulaski Park, Bloomfield. Next Monday, the team travels to Eastside, at 4 and next Wednesday, is host to Montclair, also at 4.

Last week, the girls stopped Montclair, 15-11 in 11 innings, defeated Bloomfield, 10-7 in a conference match, out slugged Passaic, 65, blanked Nutley, 3-0, and shutout Bloomfield last Saturday, 5-0 in the county quarter finals. The latter shutouts were turned in by sophomore Jeanine Luzzi, who was brilliant in four of the victories. Another sophomore, Michele Calderone, pitched well against Passaic, suffering just one bad inning where the Lady Indians talked five times.

We had a great week, what else can I say," said Corino, a little tired after the exhausting five games. "I'm thrilled with the team's progress. It was certainly nerve racking. We could

(Continued on page 18)



Around the Diamond: Laura Caruso (12) of the Belleville High School girls' softball team finishes her trip around the diamond after knocking out a home run during a game against Paterson Kennedy. Photo by Michelle Jeannotte.



# Baseball team uses confidence to defeat Paramus Catholic, 6-4

(Continued from page 15)

the team record to 4-6-1 and sent morale down another notch.

Instead, Belleville took its new found confidence and used it favorably against Paramus Catholic. The Bucs won 6-4 against a good team, as sophomore Ernie Brodie picked-up his first varsity win with a quality start. Jim Dunphy earned the save, hurling the final 1-13 innings.

Belleville took a 2-0 lead with two runs in the third. Allan Ruopp singled, Lucante singled and both men scored on a double by the red hot Dave Long. Long is hitting over .500 for the season and is on an All State tear.

Paramus Catholic, which took an 8-2 record into the game, tallied three times in the fifth to take a 3-2 lead, however the "new" Belleville team came right back.

The Bucs tallied three times in its half of the fifth, highlighted by a three run homer by Dean Mauro. Mauro's blast brought home Long, who had doubled, and Dunphy who got on via a walk.

With Belleville leading 5-4 in sixth, the Bucs added an in-

surance run as Lucante reached on an error. Long walked and Dunphy doubled home Lucante.

Brodie pitched a nice game, La Conte said. "He gave us a lift out there."

Another sophomore, Dawson Bloom, started his first game behind the plate and did a "nice job."

The next game, versus Passaic, saw Belleville take an early lead and use good pitching and defense to win impressively, 7-2. Bob Hutchison started for Belleville and the junior pitched the entire game for his first varsity win.

He was aided by a big first inning for Belleville. Ruopp started with a single and Best singled. Lucante hit into a fielders choice, erasing Ruopp at third, but Long singled to drive in Best. Dunphy walked to load the bases and Auriemma hit a two run single. Joe Perna then singled home Dunphy for a 4-0 lead.

In the fourth, the Bucs added two more runs. Ruopp singled and Best was hit by a pitch. Lucante walked to load the bases and Long hit into a fielders choice, with Best out at the

plate. Dunphy walked to bring home Best and Mauro hit a sacrifice fly to drive in Lucante.

The Bucs added one more in the seventh and Passaic spoiled Hutchison's shutout bid with two runs in the last inning. Nonetheless, it was a fine effort by "Hutch" and certainly looks good for the Buc pitching staff.

Belleville won its third straight by beating arch rival Nutley, 11-5. Jim Dunphy started and went the distance for the Bucs, taking advantage of a fine offensive performance.

Belleville tallied three times in the first and second frames for a quick 6-1 lead. In the first, Long's double brought home two runs and he scored on a sacrifice fly. In the second-inning, Long cracked a three run homer, on a 3-0 count, to boost the Buceaneer lead. The long ball was the order for the day as Ruopp hit a solo shot in the fifth and Lucante drilled a three run homer in the sixth. Nutley also hit two homers in the contest, and came within three, 7-4 in the fifth-inning.

Dunphy struck out eight and allowed just six hits. Long was 3-4 with five ribbies.

The big week was climaxed by a convincing 15-7 victory over Hackensack last Saturday. In this game, the Bucs scored in every inning but the fourth, scoring three times in the first, four

in the second, two in the third, twice in the fifth and four more in the sixth. Jay Marchese started for Belleville and pitched the entire game. He allowed five hits and just two earned runs. A wicked wind hurt the defensive effort, but the Bucs more than made up for it at the plate.

Long completed a sensational week with three more ribbies on a 2-4 day. Dunphy had four runs batted in, collected two hits. Ruopp and Marchese were both 2-3, with Marchese driving home two runs.

"We're starting to put things together," La Conte said. "I'm just glad we're starting to hit the ball."

NOTES: The Montclair game will be made up at a later date. The other tie game this season, against Paramus, will also be made up, with a tentative date set for May 20, at Paramus. Belleville and Bloomfield went into the week tied for first place in the NNJHL, thus the two games with the Bengals in four days will be big. Last season's two tied for the conference championship. Passaic was 8-4 when it played Belleville last week. In the marathon against Montclair, Marchese started. Lucante came in in the fourth and Dunphy pitched the final three innings.



Who's On First - That's Al Ruopp, shorstop for the Belleville High School baseball team, who made it safely to first base during a recent game against Montclair. Photo by Michelle Jeannotte

## Basketball champs



Basketball Champs - Barry's Go-Go basketball team were the undefeated champs of the Belleville Recreation Department's Men's Over 30 Basketball League. Pictured are some of its members with their trophies: (l-r) Mike Conry, Paul Wurzel, Darin Rizzitello, Ernest Edmonds, Tim Di Domenico, Hank Dillon, Ron Ferry and Barry Maurillo, owner.

## Six boats earn spots in finals of City Championships in Philly

(Continued from page 15)

of 180 pounds; consists of Dave Silletti in bow, Frank Pocheo, Rick Albanese, Joe Fernicola in stroke and Dennis Ives in "coxswain." The midweight boat made the finals, against some good competition.

The junior four boys placed third in their heat and made the finals. The senior four boys were very impressive.

That shell, which Giuffrida feels is starting to reach its potential, won its qualifying heat and placed a close fourth in the finals. The difference between fourth and second in that race was less than two seconds.

The freshman boys, who have been doing very well, placed second in their heat, but hit the "crab" in the finals and finished

out of the running.

A "crab" is a lost stroke and can throw an entire boat out of whack when it happens.

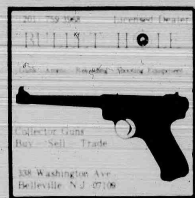
The freshman girls, rowing against novice shells, made the finals and placed sixth. Giuffrida noted that the opposing novice shells are made up of first year rowers, freshman through senior, so the Belleville girls were up against some older competition.

The junior four girls took fourth in the finals, just six seconds out of first. That boat consisted of Kim Treisger in bow, Patty Mac, Alinden or Michele Kiernan in the two position, Beth Cantarella, Lisa Luongo in stroke and coxswain Sue O'Donnell.

Finally, the senior four girls were second, just .04 of a second

out of first.

The lineup for the remainder of the season will find Belleville in the Stofesbury Regatta on May 16 and 17 in Philadelphia and the National Championships on May 23 and 24 in Virginia.



**BRANCH BROOK AUTO SALES**

372 Washington Ave  
Belleville, N.J.  
201-751-1204

**WHOLESALE TO GENERAL PUBLIC**

Now Available - Large Selection of Used Cars

All Makes and Models

Priced from \$1995 to \$2995

Stop by and see for yourself

**7 WAYS TO REDUCE YOUR AUTO INSURANCE COST:**

Stop in with your auto insurance policy and let us show you how. Our computer is programmed to search for the best coverage at the lowest cost to suit your needs.

**HERE TODAY HERE TOMORROW**  
serving the area since 1952

**HARVEY KRAMER AGENCY INC.**

INSURANCE

475 Washington Avenue, Belleville 201-751-1266

## Volleyball camp for NJIT as DeNure sets August dates

High School students who want to improve their volleyball skills over the summer can sign up for New Jersey Institute of Technology's second annual Volleyball Camp.

Directed by Dave DeNure, NJIT's women's volleyball coach, the camp will be conducted the week of Aug. 25-28 from 9 a.m. to 3 p.m. each day in the Entwistle Gymnasium on the Newark campus. Coaching will be appropriate for all ability levels. Tuition is \$80.

Further information is available from Dave DeNure, New Jersey Institute of Technology, Newark, N.J. 07102, 306-3623.

**HONDA**

**SCOOTERS**

**SCOOTERS**

**Priced From**

**\$449** and up

Elite 80 - \$1049

**The Motorcycle Mall**

165 WASHINGTON AVE.  
BELLEVILLE  
751-4545 — 751-7727

Mom deserves a gift scent with love.

The ETO® Fragrant Blossoms™ Bouquet, Mother's Week begins May 5, so send early. Call or visit us today.

**Flowerama**

180 Washington Ave.  
Belleville 759-0012

\*All orders are made to order, no telephone orders.

**We Do Windows**

Solid vinyl REPLACEMENT Windows... That's it!

Thanks to the advanced technology of extruded vinyl, the replacement of any building materials we now do replacement windows. And we do them...

extruded frames and insulated glass to greatly reduce energy loss. Phone us for more details.

**CertainTeed**

**PURA-TEX CORP.**

Est. 1951

191 Belleville Ave.  
Belleville, N.J. 07109  
759-2200











## College News



**Berkeley Award-Winners** — Tracy Delaney, above left, and Carmela Sperduto, below left, students at Belleville High School, were among outstanding high school business students from throughout New Jersey honored for their achievements at a program held by The Berkeley School of the Landmark Inn on Woodbridge. Pictured with them are Miss Dana Phil, admissions representative with The Berkeley School of Garret Mountain, above right, and Mrs. Cynthia Thompson, admissions representative with The Berkeley School of New York City, below right.



Robert Kane and Margaret Maassmann of Belleville have earned membership in the Fairleigh Dickinson University's honor societies at the Teaneck-Hackensack campus.

Kane was among 97 students named to Phi Zeta Kappa (PZK), the university's junior honor society. At least 90 credits must be completed toward an undergraduate degree and, of these, 44 must have been earned at the university, with a cumulative grade point average of 3.20.

Maassmann was among 129 students named to Phi Omega Epsilon (POE), the university's senior honor society. Eligibility is established by completing at least 90 credits toward an undergraduate degree with a cumulative grade point average of 3.50.

Dawn Stittano of Belleville has been named to the dean's list for academic achievements during the fall trimester at Johnson & Wales College in Providence, R.I.

She is majoring in Culinary Arts.

To receive dean's list commendation, students must earn a cumulative point average of 3.75 or better.

Maria Gioino, Michael Nicotola and David Nunez of Belleville are working in various positions this spring as part of the Cooperative Education Program at Montclair State College.

Nicotola, who is majoring in graphic design, is employed at the Advocate, a political education major, is employed at Executive Fitness Center Nunez, an economics major, is employed at Valley National Bank.

Cooperative Education is a credit-able program in which students work part time on full time during a scheduled part of their three-year curriculum.



John T. Norton

John T. Norton of Belleville was one of 24 students at Rutgers University tapped for membership in the 1985-86 Who's Who Among Students in American Universities and Colleges' honor's program.

Over the past six years, Who's Who Among Students in American Universities and Colleges' has honored and rewarded the individual scholastic excellence of outstanding campus leaders. The awards are one of the greatest honors conferred each year by the American academic community.

Norton's biography, including his college record, will be presented in the 1986 editions of Who's Who Among Students in American Universities and Colleges.

He will graduate from the College of Pharmacy, Rutgers University in Piscataway this month.



Marie Pomponio

Marie Pomponio, daughter of Mrs. Claire Pomponio of Bloomfield and Carl Pomponio of Belleville, has been awarded a partial-tuition scholarship to The Berkeley School of Garret Mountain.

Pomponio will be enrolled in Berkeley's 18-month fashion marketing and management program, which provides the background for advancement to such positions as buyer, fashion coordinator and manager and leads to an Associate in Applied Science degree.

She will begin her studies in July.

Toren Gambacorta of Belleville has been named to the dean's list at the Berdard Institute in Fitchburg.

Gambacorta is enrolled in the dental assisting program, which awards the student with the fundamental theory and skills required to assist a dentist in chair-side procedures. The program includes taking and processing of dental X-rays, performing basic laboratory procedures, and educating the patient in oral

hygiene, as well as basics in office management.

Gambacorta, daughter of Mr. and Mrs. Raymond Gambacorta, is a graduate of Belleville High School. She attended Essex County Community College.

Two Belleville residents recently graduated from Kean College of New Jersey in Union.

They are: Michele Giordano and Kathleen Satter Tauge, B.A. in Early Childhood Education.

Robert LaBruzza, son of Mr. and Mrs. Vincent LaBruzza of Belleville, has been accepted as a freshman student at Palmer College of Chiropractic, Davenport, Iowa.

He will take a four academic year course of study leading to the degree of doctor of chiropractic (D.C.).

Palmer College, founded in 1895, is the world's first and largest accredited chiropractic college.

Spring it on Mom, early.



Send the FTD® Spring Garden® Bouquet. Mother's Week begins May 5. Call or visit us today.

**Flowerama**

180 Washington Ave.

Belleville 759-0012

All major credit cards accepted. For telephone orders, call 759-0012.



\*Registered trademark of FTD.

art galleries royale

OIL PAINTINGS

Large gallery, New Jersey

Photography, prints

Photo-framed on canvas

Paints & Pastels, Frames

Complete framing department



Art Spool — Jersey City State College fine arts students recently transformed Greenock Hall into "Mother Wrap-A-Round," a mammoth one-day sculpture installation. About a dozen students created the spontaneous sculpture using paper, thin string and discarded objects. Organizers of the event, which took place at art happenings and open reception, were art from Jersey City State College of Belleville, Richard Turner of North Bergen, it's back, Joseph Pinka of Bayonne, Jean Marie Wilkinson of Montclair and JoAnn Giamobile of Bayonne.

### Pvt. Tribuna completes service course

Pvt. Stephen M. Tribuna, son of Gerald A. and Shirley J. Tribuna of Belleville, has completed the tactical communications systems course at Fort Sill, Okla.

During the course, students were taught basic electronics, receiver and transmitter repair for tactical communications.

Tribuna is a 1985 graduate of Belleville High School.

### Take Mom out to Dinner on Her Day!

It's a wonderful way to top off her holiday. After the gifts are opened, and all the cards are read, she'll especially enjoy a relaxing dinner here on Mother's Day. We'll treat Mom royally with a sumptuous array of fine food.

After all, doesn't she deserve the very best?

**WILLIE'S DINER - RESTAURANT**

9 State St., Bloomfield. Call 748-7414

興林樓

Grand Opening

LAM'S CHINESE RESTAURANT

Special Mother's Day Dinner  
Free Flowers For Mom  
Open 11 A.M. to 10 P.M.  
Free Parking at Royal Theatre

Extensive Menu - Exotic Chinese Dishes

591 Bloomfield Ave.  
Bloomfield, N.J. Tel: 429-0124-5

SZECHUAN HUNAN CANTONESE CUISINE

### Marquee Ristorante Special Mother's Day Menu

Fruit Cup and Tortellini Soup  
Manicotti  
Choice Of One Entree  
Veal Francaise  
Combo Sea Food Platter  
Broiled Chicken  
Coffee - Tea - Ice Cream

**\$13.95**

Children under 8 - \$6.50

Please Make Reservations

429-1895 429-1849

6-12 Willow St. Bloomfield, N.J.

SHHHH

MOM'S THE WORD

ON SUNDAY, MAY 11th

AT

PROUD MARY'S

109 Franklin Street, Bloomfield

In Grateful Appreciation Of Her Efforts All Year

SPECIAL MOTHER'S DAY MENU

Dinner Served from 12 noon-6 p.m.  
— Reservations Requested —

GO AHEAD AND MAKE HER DAY!



Call 429-9246



# Obituaries

## John Maffucci, at 55; worked at Walter Kidde

John Maffucci, 55, of Bloomfield died April 30 in Mountaineer Hospital, Glen Ridge.

A Mass was offered May 3 in Mount Carmel Church, Montclair, following the funeral from the Caggiano Memorial, Montclair.

Mr. Maffucci was an assembler with the Walter Kidde Co., Belleville, for 15 years, retiring three years ago.

Born in Montclair, he moved

to Bloomfield 17 years ago.

Surviving are his wife, Shirley, four sons, John, Joseph, Steve and Gary, three daughters, Mrs. Patricia Gardner and the Misses Frances and Michelle, his father, Angelo Maffucci, three brothers, Joseph, Angelo and Vincent, three sisters, Mrs. Frances LaCascio, Mrs. Grace Infante and Mrs. Mary Russo, and five grandchildren.

## Ferdinand Del Guercio; was machine operator

A Mass for Ferdinand Del Guercio, 72, of Montclair was offered May 5 in St. Mary's Church, Nutley, after the funeral from the Megaro Memorial Home, Belleville.

Mr. DelGuercio died May 2 in St. Joseph's Hospital, Paterson. He was a machine operator for the Wallace & Tiernan Co. in Belleville for 27 years before retiring in 1979.

Mr. DelGuercio was a member of the Nutley Senior Citizens and the Wallace & Tiernan Retiree's Association. He served in the Army before World War II.

Both in Newark, he moved to Montclair two years ago.

Surviving are a son, Ferdinand, three brothers, Frank, Marco and Peter, and a sister, Mrs. Mary Marra.

## Charlotte R. King, at 88

Mrs. Charlotte R. King, 88, of Belleville died May 2 in Chilton Memorial Hospital, Pompton Plains.

Services were held May 5 in the Johnesse Nutley Home for Funerals.

She had been a practical nurse at Overbrook Hospital, Cedar

Grove, before retiring. Born in Newark, Conn., she lived in Hoboken before moving to Belleville 60 years ago.

Surviving are a daughter, Jean Maginness, a son, M. Raymond Banks, six grandchildren and four great grandchildren.

## Mrs. Jennie Lanzilotti, at 91

A Mass for Mrs. Jennie Lanzilotti, 91, of Belleville was offered May 3, in St. Peter's Church, Belleville, following the funeral from the Kierman Funeral Home, Belleville.

Mrs. Lanzilotti died April 30 in her home.

Born in Messina, Sicily, Italy, she lived in Hoboken before moving to Belleville 45 years ago.

Surviving are two sons, Angelo S. and Anthony E., a sister, Mrs. Nancy Fazio, seven grandchildren and four great grandchildren.

## F. D'Andrea; St. Anthony's Mass offered

Mrs. Frances D'Andrea, 67, of Belleville died April 29 in the Clara Maass Medical Center, Belleville.

A Mass was offered May 3 in St. Anthony's Church, Belleville, following the funeral from the Zaffo Funeral Home, Bloomfield.

This is a second mortgage subject to a first mortgage held by the W. H. Savings and Loan Association, having an approximate balance of \$21,000.00.

A full legal description is available in the Office of the Register of Essex County.

A DEPOSIT OF 20% OF THE BID PRICE IN CASH OR CERTIFIED FUNDS IS REQUIRED AT THE TIME OF SALE.

The approximate amount of the judgment to be satisfied by said sale is the sum of FIFTY ONE THOUSAND SEVEN HUNDRED SIXTY-FIVE DOLLARS AND FIVE CENTS (\$51,665.05), together with the costs of this sale.

The State reserves the right to bid upon the sale from time to time as provided by law.

THOMAS J. D'ALESSIO, Sheriff

Essex County, New Jersey

May 8, 15, 22, 29, 1986

For \$17.00

For \$17.00

For \$17.00

For \$17.00

For \$17.00

For \$17.00

For \$17.00

For \$17.00

For \$17.00

For \$17.00

For \$17.00

For \$17.00

For \$17.00

For \$17.00

For \$17.00

For \$17.00

For \$17.00

For \$17.00

For \$17.00

For \$17.00

For \$17.00

For \$17.00

For \$17.00

For \$17.00

For \$17.00

For \$17.00

For \$17.00

For \$17.00

For \$17.00

For \$17.00

For \$17.00

For \$17.00

For \$17.00

For \$17.00

For \$17.00

For \$17.00

For \$17.00

For \$17.00

For \$17.00

For \$17.00

For \$17.00

For \$17.00

For \$17.00

For \$17.00

For \$17.00

For \$17.00

For \$17.00

For \$17.00

For \$17.00

For \$17.00

For \$17.00

For \$17.00

For \$17.00

For \$17.00

For \$17.00

For \$17.00

For \$17.00

For \$17.00

For \$17.00

For \$17.00

For \$17.00

For \$17.00

For \$17.00

For \$17.00

For \$17.00

For \$17.00

For \$17.00

For \$17.00

### SHERIFF'S SALE

SUPERIOR COURT OF NEW JERSEY

CHANCERY DIVISION, ESSEX COUNTY

DOCKET NO. 1-1741-85 THE MONEY STORE

A. N. L. PLAINFIELD, INC. vs. VINCENT P. D'ARIZO, et al. DEFENDANTS, Execution For Sale Of Mortgaged Premises

By virtue of the above stated writ of Execution, to me directed, I shall expose for sale by Public Auction, in SHERIFF'S OFFICE, Essex County, County Building in Newark, N.J., on the 20th day of May next, at one thirty P.M. (Preliminary Time).

Property, commonly known as 52 Franklin St., Newark, New Jersey

Section 44-14-1 Block 258

Dimensions (approximately): 85 feet wide by 110 feet long

Nearest Cross Street, School on the interior, north on the northwesterly side of Franklin Street with the southeasterly side of Broadway Street

This is a second mortgage subject to a first mortgage held by the W. H. Savings and Loan Association, having an approximate balance of \$21,000.00.

A full legal description is available in the Office of the Register of Essex County.

A DEPOSIT OF 20% OF THE BID PRICE IN CASH OR CERTIFIED FUNDS IS REQUIRED AT THE TIME OF SALE.

The approximate amount of the judgment to be satisfied by said sale is the sum of FIFTY ONE THOUSAND SEVEN HUNDRED SIXTY-FIVE DOLLARS AND FIVE CENTS (\$51,665.05), together with the costs of this sale.

The State reserves the right to bid upon the sale from time to time as provided by law.

THOMAS J. D'ALESSIO, Sheriff

Essex County, New Jersey

May 8, 15, 22, 29, 1986

For \$17.00

For \$17.00

For \$17.00

For \$17.00

For \$17.00

For \$17.00

For \$17.00

For \$17.00

For \$17.00

For \$17.00

For \$17.00

For \$17.00

For \$17.00

For \$17.00

For \$17.00

For \$17.00

For \$17.00

For \$17.00

For \$17.00

For \$17.00

For \$17.00

For \$17.00

For \$17.00

For \$17.00

For \$17.00

For \$17.00

For \$17.00

For \$17.00

For \$17.00

For \$17.00

For \$17.00

For \$17.00

For \$17.00

For \$17.00

For \$17.00

For \$17.00

For \$17.00

For \$17.00

For \$17.00

For \$17.00

For \$17.00

For \$17.00

For \$17.00

For \$17.00

For \$17.00

For \$17.00

For \$17.00

For \$17.00

For \$17.00

For \$17.00

For \$17.00

For \$17.00

For \$17.00

For \$17.00

For \$17.00

For \$17.00

For \$17.00

For \$17.00

For \$17.00

For \$17.00

For \$17.00

For \$17.00

For \$17.00

For \$17.00

For \$17.00

For \$17.00

For \$17.00

For \$17.00

For \$17.00

For \$17.00

For \$17.00

For \$17.00

For \$17.00

### SHERIFF'S SALE

SUPERIOR COURT OF NEW JERSEY

CHANCERY DIVISION, ESSEX COUNTY

DOCKET NO. 1-1741-85 THE MONEY STORE

A. N. L. PLAINFIELD, INC. vs. VINCENT P. D'ARIZO, et al. DEFENDANTS, Execution For Sale Of Mortgaged Premises

By virtue of the above stated writ of Execution, to me directed, I shall expose for sale by Public Auction, in SHERIFF'S OFFICE, Essex County, County Building in Newark, N.J., on the 20th day of May next, at one thirty P.M. (Preliminary Time).

Property, commonly known as 52 Franklin St., Newark, New Jersey

Section 44-14-1 Block 258

Dimensions (approximately): 85 feet wide by 110 feet long

Nearest Cross Street, School on the interior, north on the northwesterly side of Franklin Street with the southeasterly side of Broadway Street

This is a second mortgage subject to a first mortgage held by the W. H. Savings and Loan Association, having an approximate balance of \$21,000.00.

A full legal description is available in the Office of the Register of Essex County.

A DEPOSIT OF 20% OF THE BID PRICE IN CASH OR CERTIFIED FUNDS IS REQUIRED AT THE TIME OF SALE.

The approximate amount of the judgment to be satisfied by said sale is the sum of FIFTY ONE THOUSAND SEVEN HUNDRED SIXTY-FIVE DOLLARS AND FIVE CENTS (\$51,665.05), together with the costs of this sale.

The State reserves the right to bid upon the sale from time to time as provided by law.

THOMAS J. D'ALESSIO, Sheriff

Essex County, New Jersey

May 8, 15, 22, 29, 1986

For \$17.00

For \$17.00

For \$17.00

For \$17.00

For \$17.00

For \$17.00

For \$17.00

For \$17.00

For \$17.00

For \$17.00

For \$17.00

For \$17.00

For \$17.00

For \$17.00

For \$17.00

For \$17.00

For \$17.00

For \$17.00

For \$17.00

For \$17.00

For \$17.00

For \$17.00

For \$17.00

For \$17.00

For \$17.00

For \$17.00

For \$17.00

For \$17.00

For \$17.00

For \$17.00

For \$17.00

For \$17.00

For \$17.00

For \$17.00

For \$17.00

For \$17.00

For \$17.00

For \$17.00

For \$17.00

For \$17.00</







# GIFTS FOR MOM



STEAK • SEAFOOD  
COCKTAILS

BANQUET FACILITIES  
LUNCHEONS & DINNER



*Billy's*

Serving dinner from  
1 p.m. - 9 p.m.  
Make reservations early

YOUR HOSTS  
JERRY LEAHY  
DON McCURLEY

287 KEARNY AVENUE  
KEARNY, N.J. 07032  
991-4744

THE NUTLEY SUN, BELLEVILLE TIMES & BLOOMFIELD LIFE  
STAFF

Wishes All Mothers  
A Very Happy Mother's Day!



SPRING GARDEN  
FLORISTS



WORLDWIDE  
DELIVERIES

Credit Cards Honored  
by Telephone

HAPPY  
MOTHER'S DAY

Free Delivery  
All over Essex, Bergen,  
Hudson & Union Counties

748-4070

395 BROAD ST.  
BLOOMFIELD

Mother's Day Gifts from  
SINCERELY YOURS

Our Selections Are Truly Gifted

- FRUIT BASKETS
- IMPORTED CANDY
- FLOWERS
- CUSTOM MADE CHEESE TRAYS



397 CENTRE STREET  
NUTLEY  
235-0345

Serving All of New Jersey & New York

You Don't Have to Shop in New York to buy the Finest

NOW THERE'S  
Charles Jewelers

One of New Jersey's largest jewelry pawnbrokers  
with an enormous inventory of fine jewelry at discount prices

WE DO IT ALL FOR LESS  
UNDER ONE ROOF



- Diamond Setting
- Repairs of All Kinds
- Free Ear Piercing
- Minor Repairs
- While You Wait
- Appraisals
- Watch Repairs
- Buying and Selling
- Estate Jewelry
- Engraving

GEMOLOGIST ON PREMISES

Diamonds, precious and semi-precious stones,  
14K gold chains, rings, bracelets, watches

CHARLES JEWELERS  
163 WASHINGTON AVENUE  
BELLEVILLE, N.J. 07109  
201-739-2468

Since  
1946

FOUNTAIN  
OF FLOWERS

A special flower arrangement  
for a special person that says

You're Special Mom

- Cut Flowers & Floral Arrangements
- Balloons
- Corsages
- Long Stem Flowers \$19.00 doz



Order Early  
340 Belleville Ave.  
Belleville

751-5089

MODELTOQUE

Modeling Agency of N.Y.C.  
(licensed and bonded)

Now Conducting Model-Talent Search!

- ★ Fashion
- ★ Commercials
- ★ Print Ads
- ★ Videos
- ★ Showroom



If you're interested in the exciting career  
of modeling contact pur NJ office for a  
free consultation.

(201) 450-0106

*Karpen's*

DELI • RESTAURANT  
1115 BLOOMFIELD AVENUE  
CLIFTON • 473-6408

Huge selection of Hot & Cold Foods — Nova Scotia Salmon,  
Smoked Fish, all kinds of Salads, Eggs Benedict,  
Roast Beef, Turkey and MUCH, MUCH MORE!

With Our Compliments, A Flower For Every Lady

MOTHERS DAY  
BRUNCH BUFFET

10:00 AM to 3:00 PM

\$9.95 — Children under 10 half price



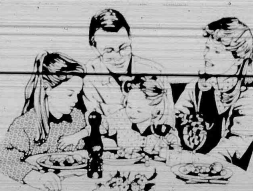
CHINESE OPEN KITCHEN  
ORDERS TO TAKE OUT

*Golden  
Jade*

751-7708/751-7712  
366 MAIN ST. • BELLEVILLE  
GRAND UNION SHOPPING CENTER

MOTHER'S DAY MENU

Antipasto Lasagna  
Choice of Fish or Meat  
Complimentary Glass of Wine  
Coffee, tea and cake  
\$15.00



SANTINI BROS.  
PIZZERIA

366 Franklin Avenue  
Nutley, N.J.



REMEMBER

"MOM"

ON HER DAY

HEART SHAPED CAKES, BOUQUET CAKES  
HOMemade BUTTER COOKIES, TRAYS, SPECIAL  
LY DECORATED CAKES FOR MOTHER'S DAY

MEYER'S BAKERY & CAFE  
227 FRANKLIN AVENUE  
NUTLEY, N.J. 667-8587

KIELB'S BAKERY  
919 FRANKLIN AVENUE  
NEWARK, N.J. 482-0585

MEYER'S BAKERY  
382 WASHINGTON AVENUE  
BELLEVILLE, N.J. 759-1873

HAPPY MOTHER'S DAY

NUTLEY  
GIFT SHOP

223 FRANKLIN AVENUE  
NUTLEY, N.J.

667-1661



NEW ATTITUDE  
BOUTIQUE

88 HALSEY ST.  
NEWARK  
642-4005

SPECIALIZING  
IN DESIGNER FASHIONS  
FOR THE FULL FIGURED WOMAN  
SIZES 14-26



# GIFTS FOR MOM



THE NUTLEY SUN, BELLEVILLE TIMES & BLOOMFIELD LIFE  
STAFF

Wishes All Mothers  
A Very Happy Mother's Day!

## Hunan Palace Chinese Restaurant

Visit our new location at  
308 GLENWOOD AVE.  
BLOOMFIELD  
Bloomfield Center  
748-0732



Take Out - Eat In

Open Mon-Thurs 11 a.m.-10 p.m.  
Fri & Sat 11 a.m.-11 p.m.  
Sun 3-10 p.m.

## ladies —

If you are 5-4 — slender —  
weigh 90-100 — and feel in  
the mood for the latest fashions —

la petite has the answer!  
If you are ready at last to  
meet spring in the new styles  
and colors —

la petite has the answer!  
If you are looking for a place  
that has better — and only  
better —

la petite has the answer!  
Show us — Flutter, slinky —  
hip, belted — front, back —  
flared, belted — belted —  
flared — belted — belted —  
flared — belted — belted —

## la petite II

401 bloomfield ave., Caldwell, N.J. (201) 228-8845

rockaway mall, rockaway, n.j. (201) 328-1175

heidelberg plaza, clinton, n.j. (201) 767-0114



REMEMBER "MOM"  
ON HER SPECIAL DAY  
GIVE HER A BOX OF  
DELICIOUS HOME  
MADE CHOCOLATES



MARY DUNHAM  
HOME MADE CANDY  
610 BLOOMFIELD AVENUE  
BLOOMFIELD  
743-6772

## Del Polito Hairdressers



Our staff of specialists would like to re-  
mind you that we are a Full Service  
Salon catering to men and women.  
Styling, cutting, waving, manicuring,  
hair extension, wraps, acrylics, pedicure,  
and hair coloring of every effect.  
Open Wednesday and Friday 9:00am-9:00pm  
Tuesday and Thursday 2:00pm-9:00pm  
Saturday - 8:00am-5:00pm  
Look and feel our VERY best. Call today!

12 Belleville Ave.  
Bloomfield, N.J.  
opposite A & J Shopping Center  
748-8571

## MASCOLO'S FLORISTS



FLOWERS  
FOR ALL OCCASIONS

FLOWERS  
BY WIFE

FREE DELIVERY SERVICE  
All Major Credit Cards Accepted

743-6251  
417 Bloomfield Ave.  
Bloomfield

## COME FOR YOUR FREE GIFT

### For Mother's Day

One of New Jersey's  
oldest and largest  
women's fashion stores.

Free Alterations at always! including  
sale items. Charge it on Seibel's own  
90-day no interest credit plan or any  
major credit card  
with any purchase\*

OPEN DAILY 11-5:45  
WED. & FRI. 7-45

## SEIBEL'S

68 Broadway, Newark  
482-0111

\*Park Free in Our Attached Adjacent Parking Lot



## VINNIES PIZZERIA

227 CENTRE ST  
NUTLEY, N.J.

667-1551



FREE DELIVERY  
NUTLEY & BELLEVILLE



BETTY'S GIFTS  
&  
NOVELTIES, INC.

Mother's Day Sale 10% off with this ad.  
Gift items, clothing for the whole family.  
Hours: Tues-Thurs 10-5, Fri 10-7 & Sat 9-5

167 A FRANKLIN AVENUE  
NUTLEY  
867-2910



THE NUTLEY SUN  
BELLEVILLE TIMES  
BLOOMFIELD LIFE

*Classified*

**YOUR ADS ARE SURE TO GET RESULTS!**

**667-3000**  
Mon. thru Fri. 9:00 AM to 5:00 PM  
Deadline - Tues. 12:00 Noon

**CLASSIFIED INDEX**

CHECK YOUR AD THE FIRST DAY OF PUBLICATION. The Belleville Times, The Nutley Sun, and The Bloomfield Life are responsible only for MAJOR errors in the first day of insertion. **CREDITS:** Credits and adjustments are to be made only for errors which significantly alter the effectiveness of the ad, such as a wrong telephone or price. Credits will not be issued for typographical errors or misprinted words. The newspaper assumes responsibility only for MAJOR errors in the first day of publication. See Classified Use Ads in All Three Papers.

See Yellow Pages for: **ABC TV36** Channel 36  
During "The Community Network News" Time Frame

**01. WHEELS**

05. Auto Sales  
10. Auto Insurance  
15. Used Cars Sales  
20. Auto Wanted  
25. Campers/Tent  
30. Boat Sales  
35. Boat Wanted  
40. Motorcycles/Scooters/Bikes  
45. Van Sales  
50. Van Wanted  
55. Auto Wreckers

**025 ANNOUNCEMENTS**

285. Bids & Auctions  
290. Business Notices  
295. Entertainment  
300. General Notices  
305. Lost & Found  
310. Personal Notices  
315. Professional Notices  
320. Public Notices

**027 CHILD CARE**

2785. Baby Sitter  
2790. Nursery Schools  
2795. Pre-School

**029 DIAL-A-SERVICE**

2942. Accounting Services  
2943. Air Conditioning  
2945. Alarms  
2947. Ambulance Service  
2949. Appliance Repair  
2943. Auto Repair  
2952. Boarding Houses  
2955. Bookkeeping  
2956. Child Care  
2957. Cleaning Services  
2958. Cleaning Services  
2959. Cleaning Services  
2960. Cleaning Services  
2961. Cleaning Services  
2962. Cleaning Services  
2963. Cleaning Services  
2964. Cleaning Services  
2965. Cleaning Services  
2966. Cleaning Services  
2967. Cleaning Services  
2968. Cleaning Services  
2969. Cleaning Services  
2970. Cleaning Services  
2971. Cleaning Services  
2972. Cleaning Services  
2973. Cleaning Services  
2974. Cleaning Services  
2975. Cleaning Services  
2976. Cleaning Services  
2977. Cleaning Services  
2978. Cleaning Services  
2979. Cleaning Services  
2980. Cleaning Services  
2981. Cleaning Services  
2982. Cleaning Services  
2983. Cleaning Services  
2984. Cleaning Services  
2985. Cleaning Services  
2986. Cleaning Services  
2987. Cleaning Services  
2988. Cleaning Services  
2989. Cleaning Services  
2990. Cleaning Services  
2991. Cleaning Services  
2992. Cleaning Services  
2993. Cleaning Services  
2994. Cleaning Services  
2995. Cleaning Services  
2996. Cleaning Services  
2997. Cleaning Services  
2998. Cleaning Services  
2999. Cleaning Services

**034 PETS & LIVESTOCK**

2995. Fish  
2996. Fish  
2997. Fish  
2998. Fish  
2999. Fish  
3000. Fish  
3001. Fish  
3002. Fish  
3003. Fish  
3004. Fish  
3005. Fish  
3006. Fish  
3007. Fish  
3008. Fish  
3009. Fish  
3010. Fish  
3011. Fish  
3012. Fish  
3013. Fish  
3014. Fish  
3015. Fish  
3016. Fish  
3017. Fish  
3018. Fish  
3019. Fish  
3020. Fish  
3021. Fish  
3022. Fish  
3023. Fish  
3024. Fish  
3025. Fish  
3026. Fish  
3027. Fish  
3028. Fish  
3029. Fish  
3030. Fish  
3031. Fish  
3032. Fish  
3033. Fish  
3034. Fish  
3035. Fish  
3036. Fish  
3037. Fish  
3038. Fish  
3039. Fish  
3040. Fish  
3041. Fish  
3042. Fish  
3043. Fish  
3044. Fish  
3045. Fish  
3046. Fish  
3047. Fish  
3048. Fish  
3049. Fish  
3050. Fish  
3051. Fish  
3052. Fish  
3053. Fish  
3054. Fish  
3055. Fish  
3056. Fish  
3057. Fish  
3058. Fish  
3059. Fish  
3060. Fish  
3061. Fish  
3062. Fish  
3063. Fish  
3064. Fish  
3065. Fish  
3066. Fish  
3067. Fish  
3068. Fish  
3069. Fish  
3070. Fish  
3071. Fish  
3072. Fish  
3073. Fish  
3074. Fish  
3075. Fish  
3076. Fish  
3077. Fish  
3078. Fish  
3079. Fish  
3080. Fish  
3081. Fish  
3082. Fish  
3083. Fish  
3084. Fish  
3085. Fish  
3086. Fish  
3087. Fish  
3088. Fish  
3089. Fish  
3090. Fish  
3091. Fish  
3092. Fish  
3093. Fish  
3094. Fish  
3095. Fish  
3096. Fish  
3097. Fish  
3098. Fish  
3099. Fish  
3100. Fish  
3101. Fish  
3102. Fish  
3103. Fish  
3104. Fish  
3105. Fish  
3106. Fish  
3107. Fish  
3108. Fish  
3109. Fish  
3110. Fish  
3111. Fish  
3112. Fish  
3113. Fish  
3114. Fish  
3115. Fish  
3116. Fish  
3117. Fish  
3118. Fish  
3119. Fish  
3120. Fish  
3121. Fish  
3122. Fish  
3123. Fish  
3124. Fish  
3125. Fish  
3126. Fish  
3127. Fish  
3128. Fish  
3129. Fish  
3130. Fish  
3131. Fish  
3132. Fish  
3133. Fish  
3134. Fish  
3135. Fish  
3136. Fish  
3137. Fish  
3138. Fish  
3139. Fish  
3140. Fish  
3141. Fish  
3142. Fish  
3143. Fish  
3144. Fish  
3145. Fish  
3146. Fish  
3147. Fish  
3148. Fish  
3149. Fish  
3150. Fish  
3151. Fish  
3152. Fish  
3153. Fish  
3154. Fish  
3155. Fish  
3156. Fish  
3157. Fish  
3158. Fish  
3159. Fish  
3160. Fish  
3161. Fish  
3162. Fish  
3163. Fish  
3164. Fish  
3165. Fish  
3166. Fish  
3167. Fish  
3168. Fish  
3169. Fish  
3170. Fish  
3171. Fish  
3172. Fish  
3173. Fish  
3174. Fish  
3175. Fish  
3176. Fish  
3177. Fish  
3178. Fish  
3179. Fish  
3180. Fish  
3181. Fish  
3182. Fish  
3183. Fish  
3184. Fish  
3185. Fish  
3186. Fish  
3187. Fish  
3188. Fish  
3189. Fish  
3190. Fish  
3191. Fish  
3192. Fish  
3193. Fish  
3194. Fish  
3195. Fish  
3196. Fish  
3197. Fish  
3198. Fish  
3199. Fish  
3200. Fish  
3201. Fish  
3202. Fish  
3203. Fish  
3204. Fish  
3205. Fish  
3206. Fish  
3207. Fish  
3208. Fish  
3209. Fish  
3210. Fish  
3211. Fish  
3212. Fish  
3213. Fish  
3214. Fish  
3215. Fish  
3216. Fish  
3217. Fish  
3218. Fish  
3219. Fish  
3220. Fish  
3221. Fish  
3222. Fish  
3223. Fish  
3224. Fish  
3225. Fish  
3226. Fish  
3227. Fish  
3228. Fish  
3229. Fish  
3230. Fish  
3231. Fish  
3232. Fish  
3233. Fish  
3234. Fish  
3235. Fish  
3236. Fish  
3237. Fish  
3238. Fish  
3239. Fish  
3240. Fish  
3241. Fish  
3242. Fish  
3243. Fish  
3244. Fish  
3245. Fish  
3246. Fish  
3247. Fish  
3248. Fish  
3249. Fish  
3250. Fish  
3251. Fish  
3252. Fish  
3253. Fish  
3254. Fish  
3255. Fish  
3256. Fish  
3257. Fish  
3258. Fish  
3259. Fish  
3260. Fish  
3261. Fish  
3262. Fish  
3263. Fish  
3264. Fish  
3265. Fish  
3266. Fish  
3267. Fish  
3268. Fish  
3269. Fish  
3270. Fish  
3271. Fish  
3272. Fish  
3273. Fish  
3274. Fish  
3275. Fish  
3276. Fish  
3277. Fish  
3278. Fish  
3279. Fish  
3280. Fish  
3281. Fish  
3282. Fish  
3283. Fish  
3284. Fish  
3285. Fish  
3286. Fish  
3287. Fish  
3288. Fish  
3289. Fish  
3290. Fish  
3291. Fish  
3292. Fish  
3293. Fish  
3294. Fish  
3295. Fish  
3296. Fish  
3297. Fish  
3298. Fish  
3299. Fish  
3300. Fish  
3301. Fish  
3302. Fish  
3303. Fish  
3304. Fish  
3305. Fish  
3306. Fish  
3307. Fish  
3308. Fish  
3309. Fish  
3310. Fish  
3311. Fish  
3312. Fish  
3313. Fish  
3314. Fish  
3315. Fish  
3316. Fish  
3317. Fish  
3318. Fish  
3319. Fish  
3320. Fish  
3321. Fish  
3322. Fish  
3323. Fish  
3324. Fish  
3325. Fish  
3326. Fish  
3327. Fish  
3328. Fish  
3329. Fish  
3330. Fish  
3331. Fish  
3332. Fish  
3333. Fish  
3334. Fish  
3335. Fish  
3336. Fish  
3337. Fish  
3338. Fish  
3339. Fish  
3340. Fish  
3341. Fish  
3342. Fish  
3343. Fish  
3344. Fish  
3345. Fish  
3346. Fish  
3347. Fish  
3348. Fish  
3349. Fish  
3350. Fish  
3351. Fish  
3352. Fish  
3353. Fish  
3354. Fish  
3355. Fish  
3356. Fish  
3357. Fish  
3358. Fish  
3359. Fish  
3360. Fish  
3361. Fish  
3362. Fish  
3363. Fish  
3364. Fish  
3365. Fish  
3366. Fish  
3367. Fish  
3368. Fish  
3369. Fish  
3370. Fish  
3371. Fish  
3372. Fish  
3373. Fish  
3374. Fish  
3375. Fish  
3376. Fish  
3377. Fish  
3378. Fish  
3379. Fish  
3380. Fish  
3381. Fish  
3382. Fish  
3383. Fish  
3384. Fish  
3385. Fish  
3386. Fish  
3387. Fish  
3388. Fish  
3389. Fish  
3390. Fish  
3391. Fish  
3392. Fish  
3393. Fish  
3394. Fish  
3395. Fish  
3396. Fish  
3397. Fish  
3398. Fish  
3399. Fish  
3400. Fish  
3401. Fish  
3402. Fish  
3403. Fish  
3404. Fish  
3405. Fish  
3406. Fish  
3407. Fish  
3408. Fish  
3409. Fish  
3410. Fish  
3411. Fish  
3412. Fish  
3413. Fish  
3414. Fish  
3415. Fish  
3416. Fish  
3417. Fish  
3418. Fish  
3419. Fish  
3420. Fish  
3421. Fish  
3422. Fish  
3423. Fish  
3424. Fish  
3425. Fish  
3426. Fish  
3427. Fish  
3428. Fish  
3429. Fish  
3430. Fish  
3431. Fish  
3432. Fish  
3433. Fish  
3434. Fish  
3435. Fish  
3436. Fish  
3437. Fish  
3438. Fish  
3439. Fish  
3440. Fish  
3441. Fish  
3442. Fish  
3443. Fish  
3444. Fish  
3445. Fish  
3446. Fish  
3447. Fish  
3448. Fish  
3449. Fish  
3450. Fish  
3451. Fish  
3452. Fish  
3453. Fish  
3454. Fish  
3455. Fish  
3456. Fish  
3457. Fish  
3458. Fish  
3459. Fish  
3460. Fish  
3461. Fish  
3462. Fish  
3463. Fish  
3464. Fish  
3465. Fish  
3466. Fish  
3467. Fish  
3468. Fish  
3469. Fish  
3470. Fish  
3471. Fish  
3472. Fish  
3473. Fish  
3474. Fish  
3475. Fish  
3476. Fish  
3477. Fish  
3478. Fish  
3479. Fish  
3480. Fish  
3481. Fish  
3482. Fish  
3483. Fish  
3484. Fish  
3485. Fish  
3486. Fish  
3487. Fish  
3488. Fish  
3489. Fish  
3490. Fish  
3491. Fish  
3492. Fish  
3493. Fish  
3494. Fish  
3495. Fish  
3496. Fish  
3497. Fish  
3498. Fish  
3499. Fish  
3500. Fish  
3501. Fish  
3502. Fish  
3503. Fish  
3504. Fish  
3505. Fish  
3506. Fish  
3507. Fish  
3508. Fish  
3509. Fish  
3510. Fish  
3511. Fish  
3512. Fish  
3513. Fish  
3514. Fish  
3515. Fish  
3516. Fish  
3517. Fish  
3518. Fish  
3519. Fish  
3520. Fish  
3521. Fish  
3522. Fish  
3523. Fish  
3524. Fish  
3525. Fish  
3526. Fish  
3527. Fish  
3528. Fish  
3529. Fish  
3530. Fish  
3531. Fish  
3532. Fish  
3533. Fish  
3534. Fish  
3535. Fish  
3536. Fish  
3537. Fish  
3538. Fish  
3539. Fish  
3540. Fish  
3541. Fish  
3542. Fish  
3543. Fish  
3544. Fish  
3545. Fish  
3546. Fish  
3547. Fish  
3548. Fish  
3549. Fish  
3550. Fish  
3551. Fish  
3552. Fish  
3553. Fish  
3554. Fish  
3555. Fish  
3556. Fish  
3557. Fish  
3558. Fish  
3559. Fish  
3560. Fish  
3561. Fish  
3562. Fish  
3563. Fish  
3564. Fish  
3565. Fish  
3566. Fish  
3567. Fish  
3568. Fish  
3569. Fish  
3570. Fish  
3571. Fish  
3572. Fish  
3573. Fish  
3574. Fish  
3575. Fish  
3576. Fish  
3577. Fish  
3578. Fish  
3579. Fish  
3580. Fish  
3581. Fish  
3582. Fish  
3583. Fish  
3584. Fish  
3585. Fish  
3586. Fish  
3587. Fish  
3588. Fish  
3589. Fish  
3590. Fish  
3591. Fish  
3592. Fish  
3593. Fish  
3594. Fish  
3595. Fish  
3596. Fish  
3597. Fish  
3598. Fish  
3599. Fish  
3600. Fish  
3601. Fish  
3602. Fish  
3603. Fish  
3604. Fish  
3605. Fish  
3606. Fish  
3607. Fish  
3608. Fish  
3609. Fish  
3610. Fish  
3611. Fish  
3612. Fish  
3613. Fish  
3614. Fish  
3615. Fish  
3616. Fish  
3617. Fish  
3618. Fish  
3619. Fish  
3620. Fish  
3621. Fish  
3622. Fish  
3623. Fish  
3624. Fish  
3625. Fish  
3626. Fish  
3627. Fish  
3628. Fish  
3629. Fish  
3630. Fish  
3631. Fish  
3632. Fish  
3633. Fish  
3634. Fish  
3635. Fish  
3636. Fish  
3637. Fish  
3638. Fish  
3639. Fish  
3640. Fish  
3641. Fish  
3642. Fish  
3643. Fish  
3644. Fish  
3645. Fish  
3646. Fish  
3647. Fish  
3648. Fish  
3649. Fish  
3650. Fish  
3651. Fish  
3652. Fish  
3653. Fish  
3654. Fish  
3655. Fish  
3656. Fish  
3657. Fish  
3658. Fish  
3659. Fish  
3660. Fish  
3661. Fish  
3662. Fish  
3663. Fish  
3664. Fish  
3665. Fish  
3666. Fish  
3667. Fish  
3668. Fish  
3669. Fish  
3670. Fish  
3671. Fish  
3672. Fish  
3673. Fish  
3674. Fish  
3675. Fish  
3676. Fish  
3677. Fish  
3678. Fish  
3679. Fish  
3680. Fish  
3681. Fish  
3682. Fish  
3683. Fish  
3684. Fish  
3685. Fish  
3686. Fish  
3687. Fish  
3688. Fish  
3689. Fish  
3690. Fish  
3691. Fish  
3692. Fish  
3693. Fish  
3694. Fish  
3695. Fish  
3696. Fish  
3697. Fish  
3698. Fish  
3699. Fish  
3700. Fish  
3701. Fish  
3702. Fish  
3703. Fish  
3704. Fish  
3705. Fish  
3706. Fish  
3707. Fish  
3708. Fish  
3709. Fish  
3710. Fish  
3711. Fish  
3712. Fish  
3713. Fish  
3714. Fish  
3715. Fish  
3716. Fish  
3717. Fish  
3718. Fish  
3719. Fish  
3720. Fish  
3721. Fish  
3722. Fish  
3723. Fish  
3724. Fish  
3725. Fish  
3726. Fish  
3727. Fish  
3728. Fish  
3729. Fish  
3730. Fish  
3731. Fish  
3732. Fish  
3733. Fish  
3734. Fish  
3735. Fish  
3736. Fish  
3737. Fish  
3738. Fish  
3739. Fish  
3740. Fish  
3741. Fish  
3742. Fish  
3743. Fish  
3744. Fish  
3745. Fish  
3746. Fish  
3747. Fish  
3748. Fish  
3749. Fish  
3750. Fish  
3751. Fish  
3752. Fish  
3753. Fish  
3754. Fish  
3755. Fish  
3756. Fish  
3757. Fish  
3758. Fish  
3759. Fish  
3760. Fish  
3761. Fish  
3762. Fish  
3763. Fish  
3764. Fish  
3765. Fish  
3766. Fish  
3767. Fish  
3768. Fish  
3769. Fish  
3770. Fish  
3771. Fish  
3772. Fish  
3773. Fish  
3774. Fish  
3775. Fish  
3776. Fish  
3777. Fish  
3778. Fish  
3779. Fish  
3780. Fish  
3781. Fish  
3782. Fish  
3783. Fish  
3784. Fish  
3785. Fish  
3786. Fish  
3787. Fish  
3788. Fish  
3789. Fish  
3790. Fish  
3791. Fish  
3792. Fish  
3793. Fish  
3794. Fish  
3795. Fish  
3796. Fish  
3797. Fish  
3798. Fish  
3799. Fish  
3800. Fish  
3801. Fish  
3802. Fish  
3803. Fish  
3804. Fish  
3805. Fish  
3806. Fish  
3807. Fish  
3808. Fish  
3809. Fish  
3810. Fish  
3811. Fish  
3812. Fish  
3813. Fish  
3814. Fish  
3815. Fish  
3816. Fish  
3817. Fish  
3818. Fish  
3819. Fish  
3820. Fish  
3821. Fish  
3822. Fish  
3823. Fish  
3824. Fish  
3825. Fish  
3826. Fish  
3827. Fish  
3828. Fish  
3829. Fish  
3830. Fish  
3831. Fish  
3832. Fish  
3833. Fish  
3834. Fish  
3835. Fish  
3836. Fish  
3837. Fish  
3838. Fish  
3839. Fish  
3840. Fish  
3841. Fish  
3842. Fish  
3843. Fish  
3844. Fish  
3845. Fish  
3846. Fish  
3847. Fish  
3848. Fish  
3849. Fish  
3850. Fish  
3851. Fish  
3852. Fish  
3853. Fish  
3854. Fish  
3855. Fish  
3856. Fish  
3857. Fish  
3858. Fish  
3859. Fish  
3860. Fish  
3861. Fish  
3862. Fish  
3863. Fish  
3864. Fish  
3865. Fish  
3866. Fish  
3867. Fish  
3868. Fish  
3869. Fish  
3870. Fish  
3871. Fish  
3872. Fish  
3873. Fish  
3874. Fish  
3875. Fish  
3876. Fish  
3877. Fish  
3878. Fish  
3879. Fish  
3880. Fish  
3881. Fish  
3882. Fish  
3883. Fish  
3884. Fish  
3885. Fish  
3886. Fish  
3887. Fish  
3888. Fish  
3889. Fish  
3890. Fish  
3891. Fish  
3892. Fish  
3893. Fish  
3894. Fish  
3895. Fish  
3896. Fish  
3897. Fish  
3898. Fish  
3899. Fish  
3900. Fish  
3901. Fish  
3902. Fish  
3903. Fish  
3904. Fish  
3905. Fish  
3906. Fish  
3907. Fish  
3908. Fish  
3909. Fish  
3910. Fish  
3911. Fish  
3912. Fish  
3913. Fish  
3914. Fish  
3915. Fish  
3916. Fish  
3917. Fish  
3918. Fish  
3919. Fish  
3920. Fish  
3921. Fish  
3922. Fish  
3923. Fish  
3924. Fish  
3925. Fish  
3926. Fish  
3927. Fish  
3928. Fish  
3929. Fish  
3930. Fish  
3931. Fish  
3932. Fish  
3933. Fish  
3934. Fish  
3935. Fish  
3936. Fish  
3937. Fish  
3938. Fish  
3939. Fish  
3940. Fish  
3941. Fish  
3942. Fish  
3943. Fish  
3944. Fish  
3945. Fish  
3946. Fish  
3947. Fish  
3948. Fish  
3949. Fish  
3950. Fish  
3951. Fish  
3952. Fish  
3953. Fish  
3954. Fish  
3955. Fish  
3956. Fish  
3957. Fish  
3958. Fish  
3959. Fish  
3960. Fish  
3961. Fish  
3962. Fish  
3963. Fish  
3964. Fish  
3965. Fish  
3966. Fish  
3967. Fish  
3968. Fish  
3969. Fish  
3970. Fish  
3971. Fish  
3972. Fish  
3973. Fish  
3974. Fish  
3975. Fish  
3976. Fish  
3977. Fish  
3978. Fish  
3979. Fish  
3980. Fish  
3981. Fish  
3982. Fish  
3983. Fish  
3984. Fish  
3985. Fish  
3986. Fish  
3987. Fish  
3988. Fish  
3989. Fish  
3990. Fish  
3991. Fish  
3992. Fish  
3993. Fish  
3994. Fish  
3995. Fish  
3996. Fish  
3997. Fish  
3998. Fish  
3999. Fish  
4000. Fish  
4001. Fish  
4002. Fish  
4003. Fish  
4004. Fish  
4005. Fish  
4006. Fish  
4007. Fish  
4008. Fish  
4009. Fish  
4010. Fish  
4011. Fish  
4012. Fish  
4013. Fish  
4014. Fish  
4015. Fish  
4016. Fish  
4017. Fish  
4018. Fish  
4019. Fish  
4020. Fish  
4021. Fish  
4022. Fish  
4023. Fish  
4024. Fish  
4025. Fish  
4026. Fish  
4027. Fish  
4028. Fish  
4029. Fish  
4030. Fish  
4031. Fish  
4032. Fish  
4033. Fish  
4034. Fish  
4035. Fish  
4036. Fish  
4037. Fish  
4038. Fish  
4039. Fish  
4040. Fish  
4041. Fish  
4042. Fish  
4043. Fish  
4044. Fish  
4045. Fish  
4046. Fish  
4047. Fish  
4048. Fish  
4049. Fish  
4050. Fish  
4051. Fish  
4052. Fish  
4053. Fish  
4054. Fish  
4055. Fish  
4056. Fish  
4057. Fish  
4058. Fish  
4059. Fish  
4060. Fish  
4061. Fish  
4062. Fish  
4063. Fish  
4064. Fish  
4065. Fish  
4066. Fish  
4067. Fish  
4068. Fish  
4069. Fish  
4070. Fish  
4071. Fish  
4072. Fish  
4073. Fish  
4074. Fish  
4075. Fish  
4076. Fish  
4077. Fish  
4078. Fish  
4079. Fish  
4080. Fish  
4081. Fish  
4082. Fish  
4083. Fish  
4084. Fish  
4085. Fish  
4086. Fish  
4087. Fish  
4088. Fish  
4089. Fish  
4090. Fish  
4091. Fish  
4092. Fish  
4093. Fish  
4094. Fish  
4095. Fish  
4096. Fish  
4097. Fish  
4098. Fish  
4099. Fish  
4100. Fish  
4101. Fish  
4102. Fish  
4103. Fish  
4104. Fish  
4105. Fish  
4106. Fish  
4107. Fish  
4108. Fish  
4109. Fish  
4110. Fish  
4111. Fish  
4112. Fish  
4113. Fish  
4114. Fish  
4115. Fish  
4116. Fish  
4117. Fish  
4118. Fish  
4119. Fish  
4120. Fish  
4121. Fish  
4122. Fish  
4123. Fish  
4124. Fish  
4125. Fish  
4126. Fish  
4127. Fish  
4128. Fish  
4129. Fish  
4130. Fish  
4131. Fish  
4132. Fish  
4133. Fish  
4134. Fish  
4135. Fish  
4136. Fish  
4137. Fish  
4138. Fish  
4139. Fish  
4140. Fish  
4141. Fish  
4142. Fish  
4143. Fish  
4144. Fish  
4145. Fish  
4146. Fish  
4147. Fish  
4148. Fish  
4149. Fish  
4150. Fish  
4151. Fish  
4152. Fish  
4153. Fish  
4154. Fish  
4155. Fish  
4156. Fish  
4157. Fish  
4158. Fish  
4159. Fish  
4160. Fish  
4161. Fish  
4162. Fish  
4163. Fish  
4164. Fish  
4165. Fish  
4166. Fish  
4167. Fish  
4168. Fish  
4169. Fish  
4170. Fish  
4171. Fish  
4172. Fish  
4173. Fish  
4174. Fish  
4175. Fish  
4176. Fish  
4177. Fish  
4178. Fish  
4179. Fish  
4180. Fish  
4181. Fish  
4182. Fish  
4183. Fish  
4184. Fish  
4185. Fish  
4186. Fish  
4187. Fish  
4188. Fish  
4189. Fish  
4190. Fish  
4191. Fish  
4192. Fish  
4193. Fish  
4194. Fish  
4195. Fish  
4196. Fish  
4197. Fish  
4198. Fish  
4199. Fish  
4200. Fish  
4201. Fish  
4202. Fish  
4203. Fish  
4204. Fish  
4205. Fish  
4206. Fish  
4207. Fish  
4208. Fish  
4209. Fish  
4210. Fish  
4211. Fish  
4212. Fish  
4213. Fish  
4214. Fish  
4215. Fish  
4216. Fish  
4217. Fish  
4218. Fish  
4219. Fish  
4220. Fish  
4221. Fish  
4222. Fish  
4223. Fish  
4224. Fish  
4225. Fish  
4226. Fish  
4227. Fish  
4228. Fish  
4229. Fish  
4230. Fish  
4231. Fish  
4232. Fish  
4233. Fish  
4234. Fish  
4235. Fish  
4236. Fish  
4237. Fish  
4238. Fish  
4239. Fish  
4240. Fish  
4241. Fish  
4242. Fish  
4243. Fish  
4244. Fish  
4245. Fish  
4246. Fish  
4247. Fish  
4248. Fish  
4249. Fish  
4250. Fish  
4251. Fish  
4252. Fish  
4253. Fish  
4254. Fish  
4255. Fish  
4256. Fish  
4257. Fish  
4258. Fish  
4259. Fish  
4260. Fish  
4261. Fish  
4262. Fish  
4263. Fish  
4264. Fish  
4265. Fish  
4266. Fish  
4267. Fish  
4268. Fish  
4269. Fish  
4270. Fish  
4271. Fish  
4272. Fish  
4273. Fish  
4274. Fish  
4275. Fish  
4276. Fish  
4277. Fish  
4278. Fish  
4279. Fish  
4280. Fish  
4281. Fish  
4282. Fish  
4283. Fish  
4284. Fish  
4285. Fish  
4286. Fish  
4287. Fish  
4288. Fish  
4289. Fish  
4290. Fish  
4291. Fish  
4292. Fish  
4293. Fish  
4294. Fish  
4295. Fish  
4296. Fish  
4297. Fish  
4298. Fish  
4299. Fish  
4300. Fish  
4301. Fish  
4302. Fish  
4303. Fish  
4304. Fish  
4305. Fish  
4306. Fish  
4307. Fish  
4308. Fish  
4309. Fish  
4310. Fish  
4311. Fish  
4312. Fish  
4313. Fish  
4314. Fish  
4315. Fish  
4316. Fish  
4317. Fish  
4318. Fish  
4319. Fish  
4320. Fish  
4321. Fish  
4322. Fish  
4323. Fish  
4324. Fish  
4325. Fish  
4326. Fish  
4327. Fish  
4328. Fish  
4329. Fish  
4330. Fish  
4331. Fish  
4332. Fish  
4333. Fish  
4334. Fish  
4335. Fish  
4336. Fish  
4337. Fish  
4338. Fish  
4339. Fish  
4340. Fish  
4341. Fish  
4342. Fish



DIAL-A-SERVICE

## Ass't







Special meeting of the Belleville Rent Level  
Board has been scheduled for the purpose  
of hearing complaints by tenants of  
apartment buildings for Wednesday, May  
1986 at 7:30 P.M. at 383 Washington  
N.W. 2nd floor, Belleville, New Jersey.  
Previous meeting dates are hereby  
canceled and voided.

Jeanne A. Scott  
Board Secretary

Belleville Times  
18, 1986  
\$4.70

No. 884 144





# ShopRite Is The LOW PRICE LEADER!

## Party Platters From ShopRite

Be a guest at your own party, and let ShopRite do the work. Our Appy Department will prepare festive tasty platters that make any party a real feast! Stop by our Appy Department for details.

## The Appy Place

STORE SLICED, WATER ADDED

**Domestic Cooked Ham** **1.99**

STORE SLICED, NEW YORKER

**American Cheese** **1.99**

STORE SLICED

**Cooked Corned Beef** **2.99**

SHOPAR

**Skinless Franks** **1.99**

STORE SLICED

**Russer Liverwurst** **.99**

**The Fish Market**

U.S. GRADE A NEW ENGLAND

**Fresh Fillet Of Scrod Cod\*** **2.49**

U.S. GRADE A NEW ENGLAND

**Fresh Sea Scallops\*** **6.99**

U.S. GRADE A NEW ENGLAND

**Fresh Fillet of Hake\*** **2.29**

FROZEN, GENUINE ALASKAN, 8-10 OZ. SIZE

**Lobster Tails** **9.99**

## The Dairy Place

ASST. FLAVORS SUNDAY STYLE

**Dannon Yogurts** **2.89**

AVELROD

**Sour Cream** **.79**

ShopRite OR OTHER POPULAR BRANDS

**1% Low Fat Milk** **1.69**

PHILADELPHIA BRAND

**Cream Cheese** **.89**

## The Deli Place

WHITES

**Three Kings Sliced Bacon** **1.29**

WHY PAY MORE?

**Batamite Pickles** **.99**

THIN, THICK OR MILD SLICED

**ShopRite Pork Roll** **.79**

SHOPAR

**Franks or Knocks** **1.99**

## The Frozen Food Place

ShopRite GRADE A

**Orange Juice** **.99**

SHOAR CALIFORNIA, CHOPPED BROCCOLI

**Broccoli Spears** **2.99**

ASSORTED VARIETIES

**Banquet Dinners** **.79**

ASSORTED VARIETIES ShopRite

**All Natural Ice Cream** **1.99**

BEAUTIFUL

**Cumberland Stoneware Salad Plate** **.59**

**ShopRite Coupon**

WITH THIS COUPON ONE 15 LB. BAG GRANULATED

**Domino Sugar** **1.19**

Coupon good at any ShopRite Market. Limit one per family. Expires Sun. May 11 thru Sat. May 10, 1986.

**SAVE 50**

## The MEATing Place

RIB PORTION PORK ROAST OR CENTER CUT

**Pork Chops** **1.59**

OR U.S.D.A. CHOICE BEEF SHOULDER

**London Broil lb.** **1.59**

RIB PORTION, 9-11 CHOPS

**Pork Chop Combination** **1.29**

MEATY RIB PORTION

**Pork Loin For Barbecue** **1.39**

RIB PORTION

**Boneless Pork Loin Roast** **1.99**

THORN APPLE VALLEY

**Shank Portion Smoked Ham** **.89**

THORN APPLE VALLEY, BUTT PORTION

**Smoked Ham** **.99**

THORN APPLE VALLEY, CENTER CUT WATER ADDED

**Smoked Ham Slices** **2.59**

LOUIS RICH GRADE A

**FRESH TURKEY PARTS**

LOUIS RICH FRESH

**Turkey Drumsticks** **.69**

LOUIS RICH FRESH

**Turkey Wings** **.79**

LOUIS RICH FRESH, 1/2 RIB CAGE

**Turkey Breast Portions** **1.99**

LOUIS RICH FRESH, BONELESS

**Breast Tenderloins** **2.99**

## The Grocery Place

SILKA, BRAVA OR CLASSIC, INSTANT

**Nescafe Coffee** **3.99**

DOW

**Saran Wrap** **.59**

CRUSHED OR PUREE

**Como Tomatoes** **.49**

SOLID PACK, IN OIL OR WATER

**Chicken of the Sea White Tuna** **.89**

ALL VARIETIES

**Hi-C Fruit Drinks** **.69**

NEW SUMMER

**Apple Juice** **.89**

NEW CREAM WHITE

**Shortening** **.99**

ALL VARIETIES ShopRite REG. OR FROSTED

**Toaster Tarts** **.69**

GROUND COFFEE

**Chock Full O' Nuts** **2.99**

BARONS

**Grape Jelly** **.89**

10 OZ. JAR PACK OR WHOLE KNEAD CREAM

**Stokely's Corn** **.99**

ELASTIC LEG LARGE (32-34) OR MED. (48-54)

**ShopRite Diapers** **5.99**

WHY PAY MORE?

**Farm Flavor Peas** **4.99**

**VALUABLE COUPON**

WITH THIS COUPON ONE 11 LB. CAN GRINDS EXCEPT OF AL

**Maxwell House Coffee** **2.69**

Coupon good at any ShopRite Market. Limit one per family. Expires Sun. May 11 thru Sat. May 10, 1986.

**SAVE 70**

THORN APPLE VALLEY THICK CUT

**Corned Beef Brisket** **1.49**

THORN APPLE VALLEY THIN CUT

**Corned Beef Brisket** **1.79**

NEW THORN APPLE VALLEY BEEF

**Hot Beef Smoked Sausage** **1.79**

NEW THORN APPLE VALLEY

**Cheddar Cheese Smoked Sausage** **1.79**

PRE-SLICED, WATER ADDED

**Tobin's Smoked Ham** **2.79**

U.S.D.A. CHOICE BONELESS BEEF

**Top Chuck Steak** **1.99**

FROZEN, GRADE A

**Concord Ducks** **.99**

SHOAR FROZEN

**Beefburgers** **1.99**

ALL VARIETIES SWISS CHEESE

**Brown & Serve Sausage** **.99**

STEAK, NEW ENGLAND

**Sandwich Steaks** **4.99**

LAND O LAKES FROZEN, WHITE & DARK

**Turkey Pan Roast** **2.99**

## WHY PAY MORE?

**Marcal Towels** **39**

MAKES 6 QTS

**4C Iced Tea Mix** **1.29**

ALL VARIETIES

**Pfeiffer Dressings** **.74**

**Marcal Towels** **39**

WHY PAY MORE?

**Marcal Towels** **39**

MAKES 6 QTS

**4C Iced Tea Mix** **1.29**

ALL VARIETIES

**Pfeiffer Dressings** **.74**

**Marcal Towels** **39**

WHY PAY MORE?

**Marcal Towels** **39**

MAKES 6 QTS

**4C Iced Tea Mix** **1.29**

ALL VARIETIES

**Pfeiffer Dressings** **.74**

**Marcal Towels** **39**

WHY PAY MORE?

**Marcal Towels** **39**

MAKES 6 QTS

**4C Iced Tea Mix** **1.29**

ALL VARIETIES

**Pfeiffer Dressings** **.74**

**Marcal Towels** **39**

WHY PAY MORE?

**Marcal Towels** **39**

MAKES 6 QTS

**4C Iced Tea Mix** **1.29**

ALL VARIETIES

**Pfeiffer Dressings** **.74**

**Marcal Towels** **39**

WHY PAY MORE?

**Marcal Towels** **39**

MAKES 6 QTS

**4C Iced Tea Mix** **1.29**

ALL VARIETIES

**Pfeiffer Dressings** **.74**

**Marcal Towels** **39**

WHY PAY MORE?

**Marcal Towels** **39**

MAKES 6 QTS

**4C Iced Tea Mix** **1.29**

ALL VARIETIES

**Pfeiffer Dressings** **.74**

gifts for mom

**Sharpie Watches** **17.47**

1/2 PRICE! CONAIR MODEL #H5015 AVAILABLE

**Mist & Set Hairsetter** **9.99**

BATTERIES NOT INCLUDED (WHERE AVAILABLE)

**Finger Nail Dryer** **4.99**

SPLASH (WHERE AVAILABLE)

**Halston Cologne** **17.00**

WHERE AVAILABLE

**Olay Beauty Cleanser** **3.49**

WHERE AVAILABLE

**Lauren Cologne** **13.50**

WHERE AVAILABLE

**Anais Anais Splash** **13.50**

## The Produce Place

HIGH IN VITAMINS C & A

**Western Broccoli** **.89**

RED, RIPE & LUSCIOUS

**California Strawberries** **.79**

NATURAL OR WASHED

**Fresh Mushrooms** **1.19**

6 SIZE, CALIFORNIA

**Navel Oranges** **3.100**

FOR SNACKING, IMPORTED

**Ribier Grapes** **.99**

IMPORTED 120-135 SIZE

**Packham Pears** **.79**

12 SIZE, FLORIDA

**Granny Smith Apples** **.79**

100 SIZE, JUICY

**Pink Grapefruit** **3.100**

LARGE, X.E.

**Florida Oranges** **8.99**

SUPER SELECT

**Red Ripe Tomatoes** **.69**

100 SIZE, JUICY

**Crisp Cucumbers** **4.99**

100 SIZE, JUICY

**Yellow Onions** **.89**

## The Bakery Place

ROUND TOP OR SANDWICH

**ShopRite White Bread** **.59**

ASSORTED VARIETIES

**Manischewitz Bread** **.89**

WHY PAY MORE?

**Manischewitz Bread** **.89**

WHY PAY MORE?

**Manischewitz Bread** **.89**

WHY PAY MORE?

**Manischewitz Bread** **.89**

WHY PAY MORE?

**Manischewitz Bread** **.89**

WHY PAY MORE?

**Manischewitz Bread** **.89**

WHY PAY MORE?

**Manischewitz Bread** **.89**

WHY PAY MORE?

**Manischewitz Bread** **.89**

WHY PAY MORE?

**Manischewitz Bread** **.89**

WHY PAY MORE?

**Manischewitz Bread** **.89**

WHY PAY MORE?

**Manischewitz Bread** **.89**

WHY PAY MORE?

**Manischewitz Bread** **.89**

WHY PAY MORE?

**Manischewitz Bread** **.89**

WHY PAY MORE?

**Manischewitz Bread** **.89**

WHY PAY MORE?

**Manischewitz Bread** **.89**

WHY PAY MORE?

**Manischewitz Bread** **.89**

WHY PAY MORE?

**Manischewitz Bread** **.89**

WHY PAY MORE?

**Manischewitz Bread** **.89**

WHY PAY MORE?

**Manischewitz Bread** **.89**

WHY PAY MORE?

**Manischewitz Bread** **.89**

WHY PAY MORE?

**Manischewitz Bread** **.89**

WHY PAY MORE?

**Manischewitz Bread** **.89**

WHY PAY MORE?

**Manischewitz Bread** **.89**

WHY PAY MORE?

**Manischewitz Bread** **.89**

**Community Pharmacy**

Can a Supermarket Pharmacy be a Community pharmacy as well?

You bet we can! Our Community range is bigger than most, including Nutley, Belleville, Bloomfield, Clifton and Passaic, but our desire and capacity to serve our community is equal to the best.

Our low prices, quick service, and genuine interest in you and your medication requirements fit into any community.

Call us at... 235-0821

(Nitroglycerin) *Nitrobid <sup>®</sup> 6.5 mg 100 capsules	19.99	(Verapamil HCL) *Isoptin <sup>®</sup> 80 mg 100 tabs	29.99
(Diltiazem HCL) *Cardizem <sup>®</sup> 60 mg 100 tablets	37.99	(Nitroglycerin Transdermal) *Nitrodisc <sup>®</sup> 5 mg 30 tabs	29.99
(Nitroglycerin Transdermal) *Transderm Nitro <sup>®</sup> 200 tabs	29.99	(Disopyramide Controlled Release) Norpace <sup>®</sup> CR 150 mg 100 caps	39.99

Call us at... 235-0821

\*Requires prescription. †Expires 5/10/86

\*Quantities less than those listed may be subject to change.